

Where can you
find the very
best hikes,
bikes, paddles,
and outdoor
adventures in the
Finger Lakes?



gofingerlakes.org

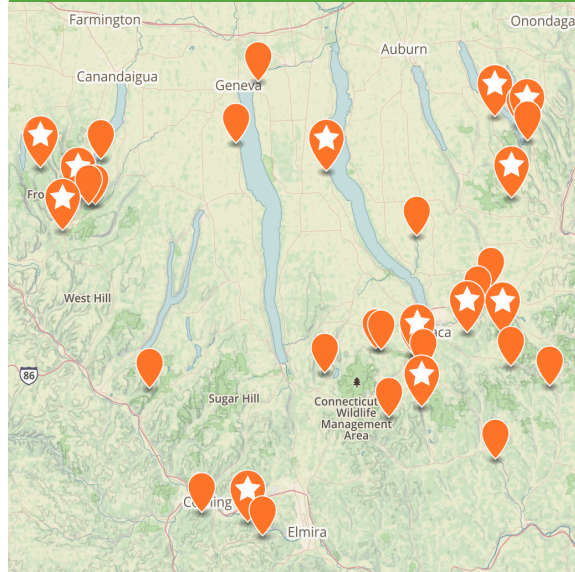
"Go Finger Lakes" is a mobile-ready web site with an interactive map featuring over 900 miles of trails! It is a free public service of the Finger Lakes Land Trust promoting conservation and recreation.



GOFINGERLAKES™
FINGER LAKES LAND TRUST

FLLT.ORG/MAP

Discover dozens of free nature preserves
of the Finger Lakes Land Trust



WE NEED YOU!

Help us save more land and water by
donating and volunteering



GIVE & JOIN
FLLT.ORG/GIVE



VOLUNTEER
FLLT.ORG/VOL



To conserve forever the lands
and waters of the Finger Lakes
region, ensuring scenic vistas,
local foods, clean water, and
wild places for everyone.

The Finger Lakes Land Trust (FLLT) is a nonprofit conservation organization working across 12 counties in Central New York. Since 1989, we have worked cooperatively with landowners and partners to protect some of the most treasured natural areas and open spaces in these vital watersheds. FLLT manages dozens of conservation areas that are free and open to the public for quiet recreation year-round. We also hold easements on protected lands that remain in private ownership. FLLT is supported by members, and you can help us do more!

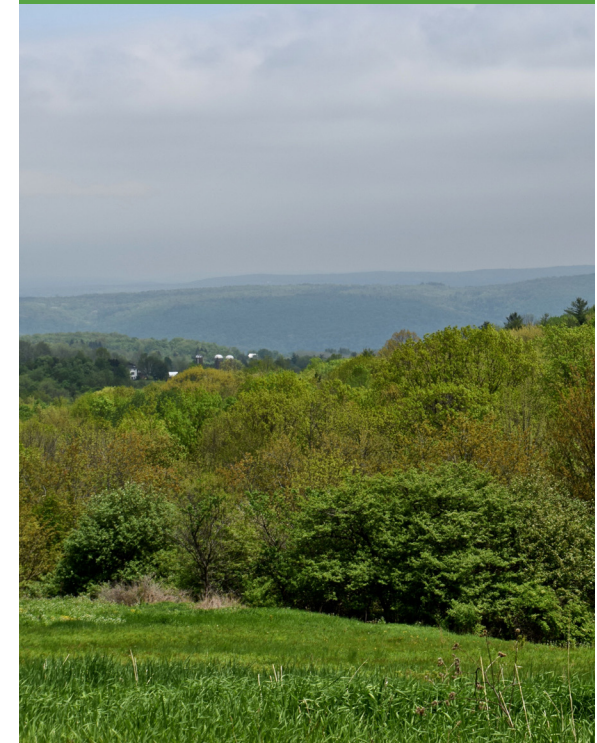
FINGER LAKES LAND TRUST

202 East Court Street, Ithaca, NY 14850
fllt.org /[facebook](#) /[instagram](#) /[twitter](#)
(607) 275-9487

**CHARLES
SPENCER
NATURE
PRESERVE**

NEWFIELD, NY

MAP & GUIDE



CONSERVED FOREVER

FLLT.ORG/CHARLESPENCER



 **Acreage:** 304 acres

 **County:** Tompkins

 **Trails:** none

This preserve in Newfield harbors mature forests, streams, meadows, and grasslands that offer sweeping views of the surrounding valley.

NATURAL HISTORY

Conserving these lands safeguards wildlife habitat for wide-ranging species such as black bear and bobcat, as well as protecting the headwaters of a tributary to Cayuta Creek and the Susquehanna River. Located in close proximity to Cornell University’s Arnot Forest, the preserve is nestled in the heart of the Emerald Necklace, an ongoing effort to link 50,000 acres of existing public conservation lands extending in an arc around Ithaca.

HISTORY

Four friends, known as the LUA Corporation, purchased this unspoiled land in 1976 to serve as a retreat from a rapidly changing society. In 2014, LUA Corporation donated 196 acres to the Finger Lakes Land Trust. With the addition of a 70-acre parcel in 2017 and another 38 acres in 2019, the preserve now covers 304 acres of permanently protected land.

ACTIVITIES
Note: Access is by permission only. There are no marked or maintained trails and no parking.

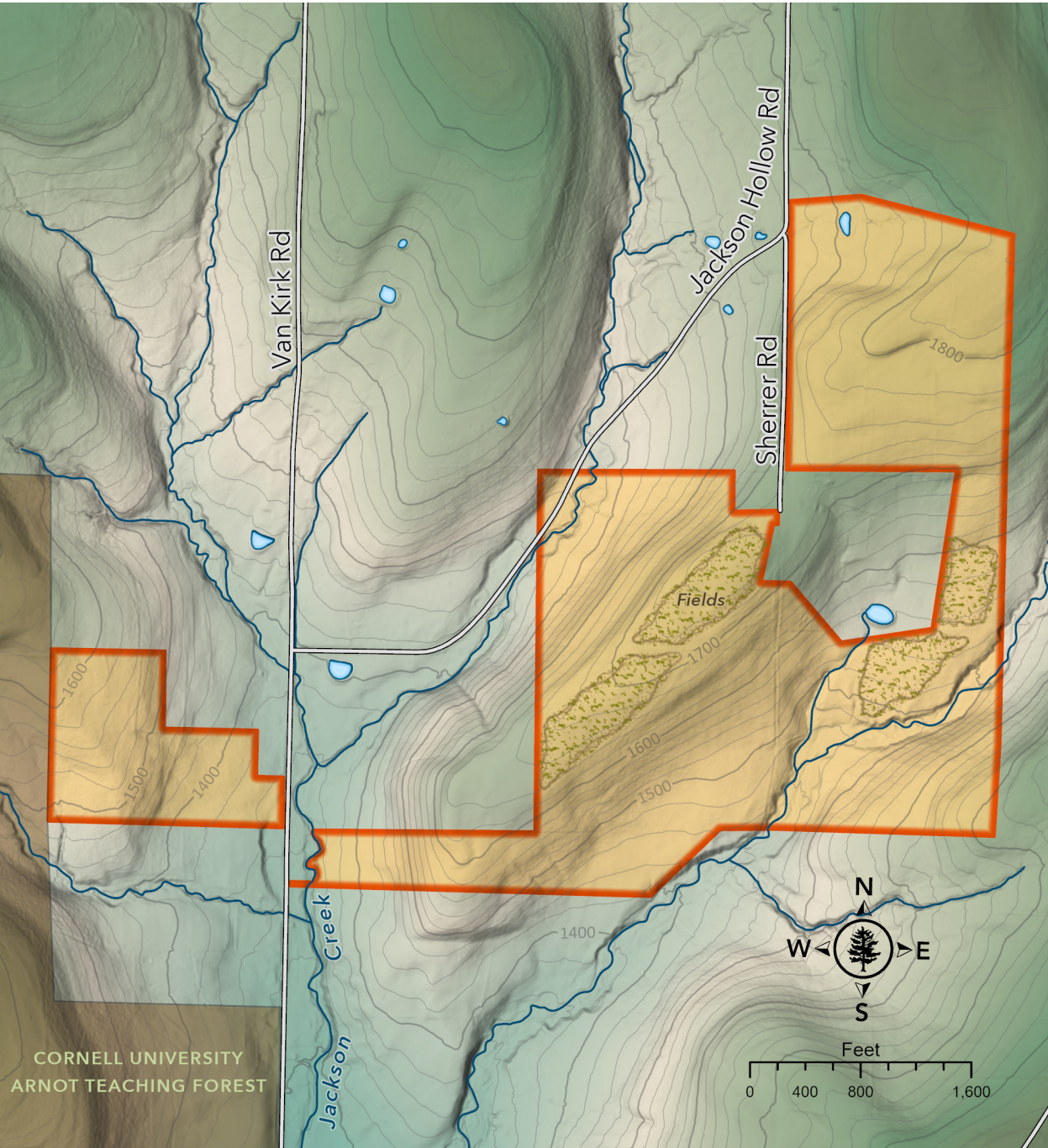
DOGS
Keep your dog under control at all times

HOURS
Open by permission only

POLICIES
See fltl.org/policies

LEARN MORE
See fltl.org/charlesspencer for more history, natural history, photos, and an interactive map.

PHOTOS: (COVER) BOB TEITELBAUM, (L) ANDY ZEPP, (R) ANDY ZEPP



There are currently no trails or parking at Charles Spencer Nature Preserve. Public access is limited to FLLT-guided field trips only.

 **Nature Preserve Boundary**