

Where can you  
find the very  
best hikes,  
bikes, paddles,  
and outdoor  
adventures in the  
Finger Lakes?



[gofingerlakes.org](http://gofingerlakes.org)

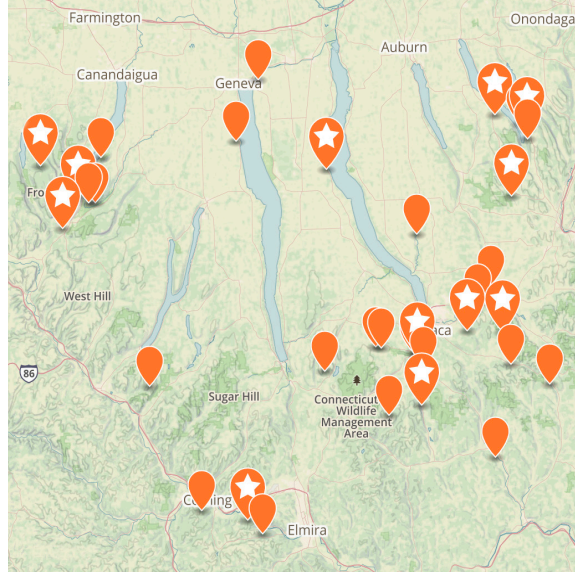
"Go Finger Lakes" is a mobile-ready web site with an interactive map showing over 600 miles of trails. It is a free public service of the Finger Lakes Land Trust promoting conservation and recreation.



**GOFINGERLAKES™**  
FINGER LAKES LAND TRUST

**FLLT.ORG/MAP**

Discover over 35 free nature preserves  
of the Finger Lakes Land Trust



**WE NEED YOU!**

Help us save more land and water by  
donating and volunteering



**GIVE & JOIN**  
**FLLT.ORG/GIVE**



**VOLUNTEER**  
**FLLT.ORG/VOL**



To conserve forever the lands  
and waters of the Finger Lakes  
region, ensuring scenic vistas,  
local foods, clean waters, and  
wild places for everyone.

The Finger Lakes Land Trust is a nonprofit conservation organization working across a 12-county region in Central New York. We have worked cooperatively with landowners and partners to permanently protect over 27,000 acres of treasured natural areas and scenic farmlands. The Land Trust owns and manages more than 45 conservation areas that are open to the public for quiet recreation. We hold over 150 easements on protected lands that remain in private ownership. FLLT is supported by members, and you can help us save more land.

**FINGER LAKES LAND TRUST**

202 East Court Street, Ithaca, NY 14850  
[fllt.org](http://fllt.org) /facebook /instagram /twitter  
(607) 275-9487

**CHARLES  
SPENCER  
NATURE  
PRESERVE**

NEWFIELD, NY

**MAP & GUIDE**



**CONSERVED FOREVER**

**FLLT.ORG/CHARLESPENCER**





 **Acreage:** 304 acres

 **County:** Tompkins

 **Trails:** none

This preserve in Newfield harbors mature forests, streams, meadows, and grasslands that offer sweeping views of the surrounding valley.

**NATURAL HISTORY**

Conserving these lands safeguards wildlife habitat for wide-ranging species such as black bear and bobcat, as well as protecting the headwaters of a tributary to Cayuta Creek and the Susquehanna River. Located in close proximity to Cornell University’s Arnot Forest, the preserve is nestled in the heart of the Emerald Necklace, an ongoing effort to link 50,000 acres of existing public conservation lands extending in an arc around Ithaca.

**HISTORY**

Four friends, known as the LUA Corporation, purchased this unspoiled land in 1976 to serve as a retreat from a rapidly changing society. In 2014, LUA Corporation donated 196 acres to the Finger Lakes Land Trust. With the addition of a 70-acre parcel in 2017 and another 38 acres in 2019, the preserve now covers 304 acres of permanently protected land.

**ACTIVITIES**

Note: Access is by permission only. There are no marked or maintained trails and no parking.

**DOGS**

Keep your dog under control at all times

**HOURS**

Open by permission only

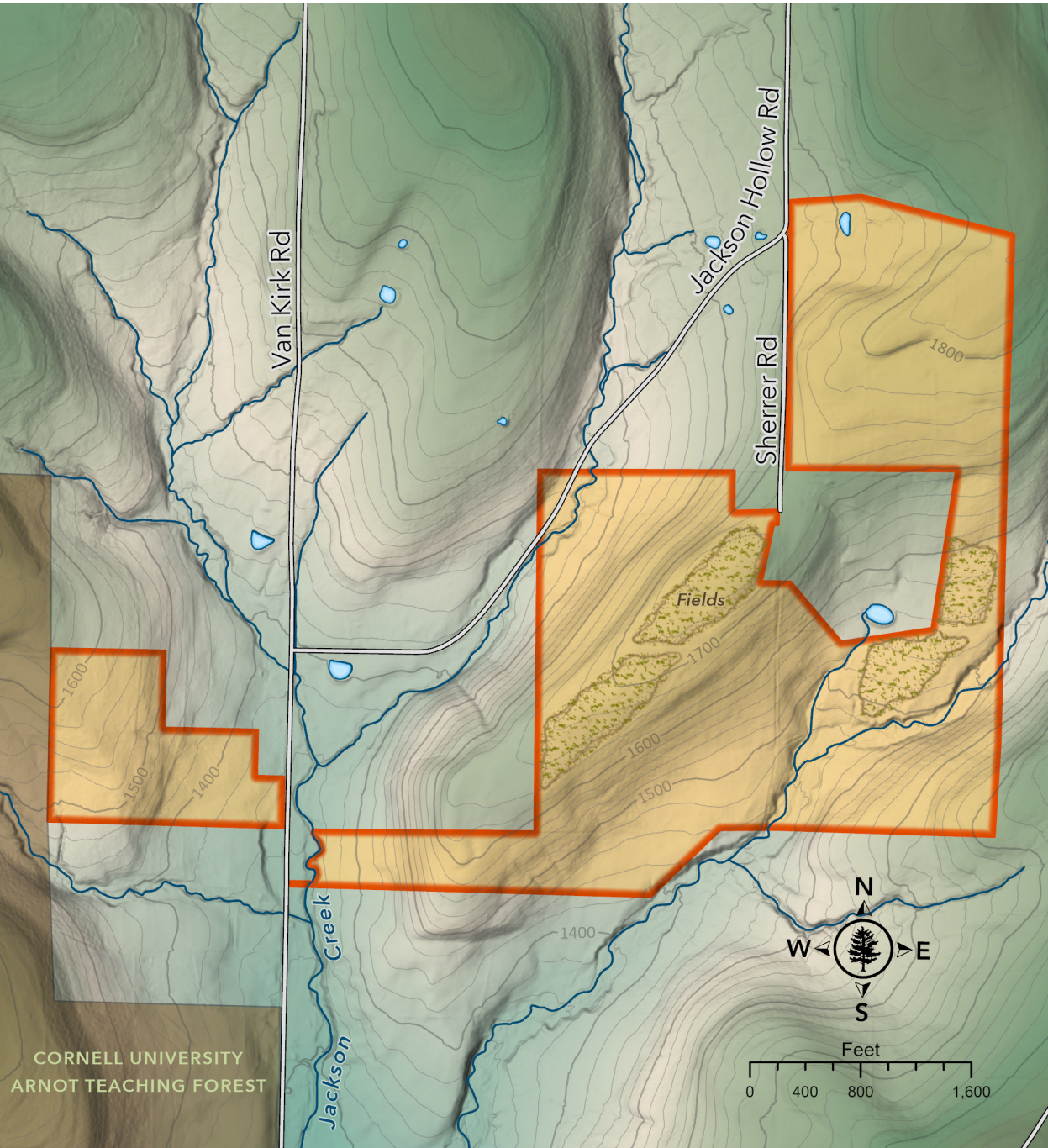
**POLICIES**

See [fltl.org/policies](http://fltl.org/policies)

**LEARN MORE**

See [fltl.org/charlesspencer](http://fltl.org/charlesspencer) for more history, natural history, photos, and an interactive map.

PHOTOS: (COVER) BOB TEITELBAUM, (L) ANDY ZEPP, (R) ANDY ZEPP



**There are currently no trails or parking at Charles Spencer Nature Preserve. Public access is limited to FLLT-guided field trips only.**

 **Nature Preserve Boundary**