

Where can you
find the very
best hikes,
bikes, paddles,
and outdoor
adventures in the
Finger Lakes?



gofingerlakes.org

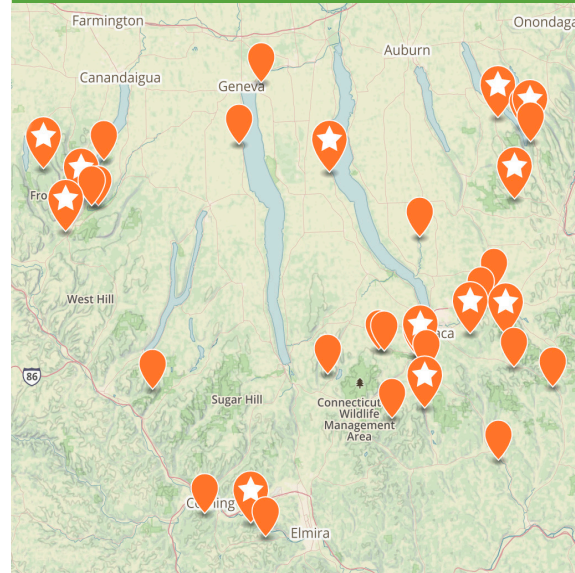
"Go Finger Lakes" is a mobile-ready web site with an interactive map showing over 600 miles of trails. It is a free public service of the Finger Lakes Land Trust promoting conservation and recreation.



GOFINGERLAKES™
FINGER LAKES LAND TRUST

FLLT.ORG/MAP

Discover over 45 free nature preserves
of the Finger Lakes Land Trust



WE NEED YOU!

Help us save more land and water by
donating and volunteering



GIVE & JOIN
FLLT.ORG/GIVE



VOLUNTEER
FLLT.ORG/VOL



To conserve forever the lands
and waters of the Finger Lakes
region, ensuring scenic vistas,
local foods, clean waters, and
wild places for everyone.

The Finger Lakes Land Trust is a nonprofit conservation organization working across a 12-county region in Central New York. We have worked cooperatively with landowners and partners to permanently protect over 27,000 acres of treasured natural areas and scenic farmlands. The Land Trust owns and manages more than 45 conservation areas that are open to the public for quiet recreation. We hold over 150 easements on protected lands that remain in private ownership. FLLT is supported by members, and you can help us save more land.

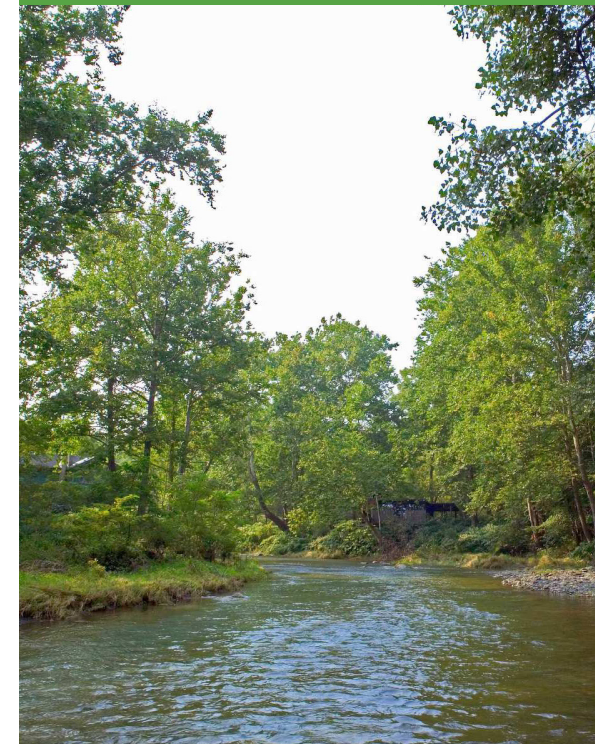
FINGER LAKES LAND TRUST

202 East Court Street, Ithaca, NY 14850
fllt.org /facebook /instagram /twitter
(607) 275-9487

SALMON CREEK BIRD SANCTUARY

LANSING, NY

MAP & GUIDE



**CONSERVED FOREVER
OPEN TO ALL**

FLLT.ORG/SALMON



 **Acreage:** 33 acres

 **County:** Tompkins

 **Trails:** n/a

The Salmon Creek Bird Sanctuary is in one of New York State's Important Bird Areas (IBA) as identified by the National Audubon Society.

NATURAL HISTORY

In 1998, 48 pairs of Cerulean Warblers were found around the preserve, along with Scarlet Tanagers, Hooded Warblers, Baltimore Orioles, and a host of other birds. Large tracts of uninterrupted forest are crucial for the protection of Cerulean Warblers and other neotropical migrants. Here the forest of tall cottonwood, sycamore, willow, and locust has a dense understory of shrubs and herbaceous vegetation. Salmon Creek and several tributaries meander through the preserve, often changing course during floods or following logjams.

HISTORY

Thanks to an anonymous donor and a collaboration between the Finger Lakes Land Trust and the Cornell Laboratory of Ornithology, FLLT purchased the land for the preserve—one parcel in 1998, two more in 2000. FLLT hopes to protect additional lands in the IBA in the years ahead.

ACTIVITIES

Birdwatching: *To help protect the sanctuary's birds, there are no trails on the preserve. However, many of the birds can be seen and heard easily while walking slowly along the road.*

DOGS

Keep your dog under control at all times

HOURS

Open dawn to dusk all year

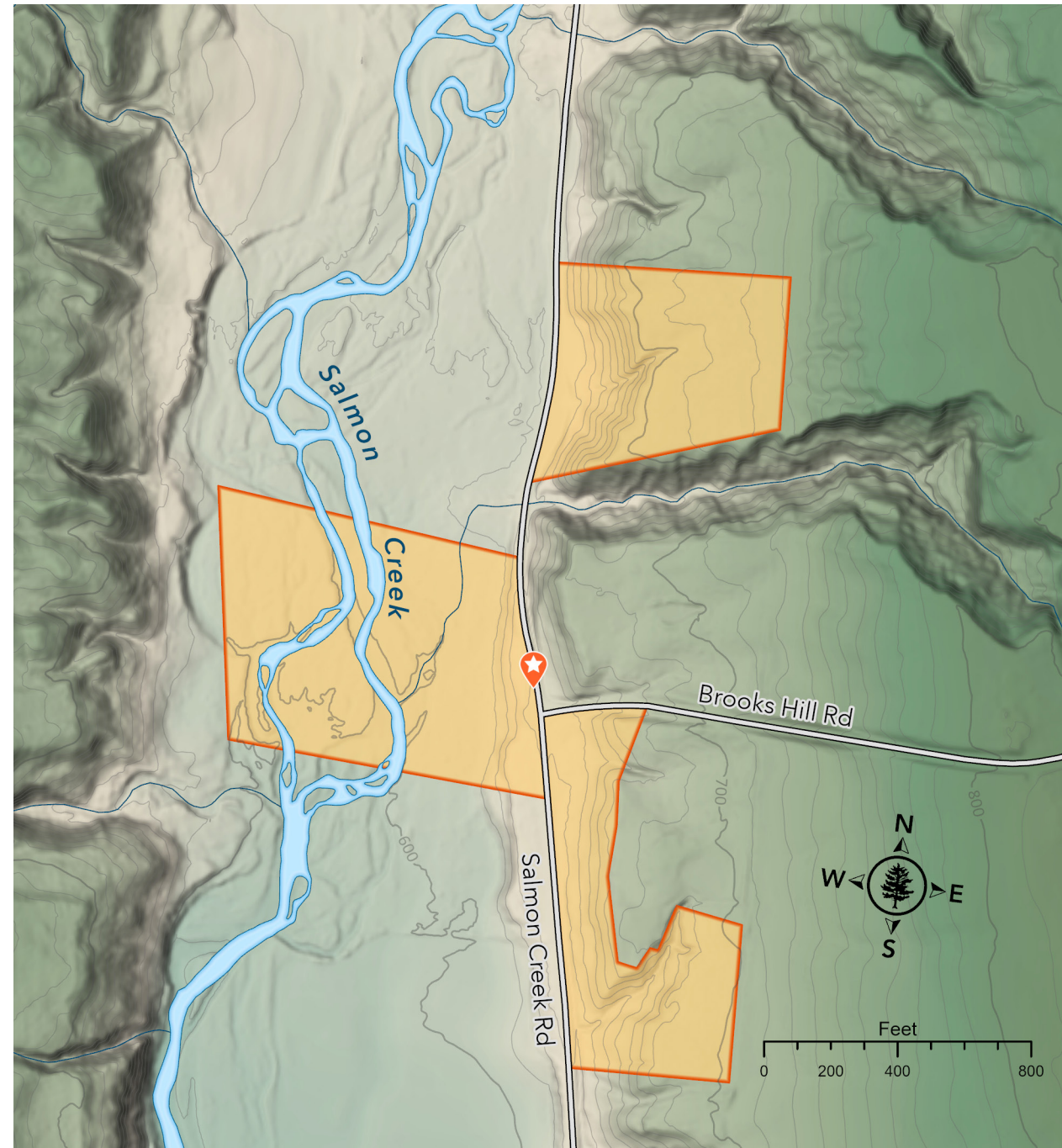
POLICIES

See fllt.org/policies

LEARN MORE

See fllt.org/salmon for history, photos, and an interactive map.

PHOTOS: (COVER) BILL HECHT, (L) CHRIS RAY, (R) CHRIS RAY



There are no trails at Salmon Creek Bird Sanctuary at this time.

 **Pull-off Parking Only**

 **Nature Preserve Boundary**