

Where can you  
find the very  
best hikes,  
bikes, paddles,  
and outdoor  
adventures in the  
Finger Lakes?



[gofingerlakes.org](http://gofingerlakes.org)

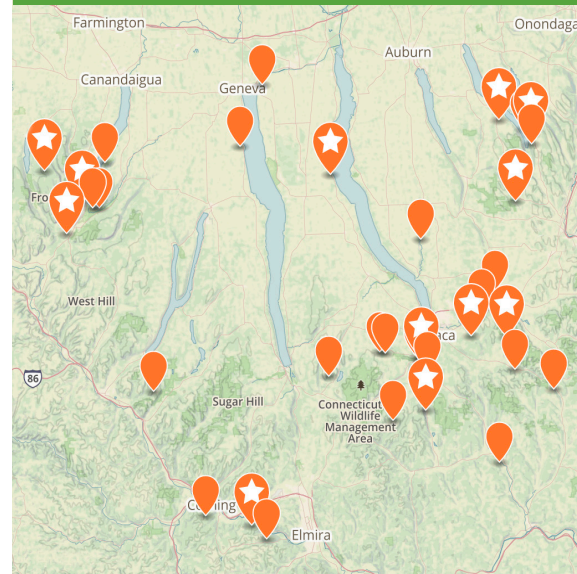
"Go Finger Lakes" is a mobile-ready web site with an interactive map featuring over 900 miles of trails! It is a free public service of the Finger Lakes Land Trust promoting conservation and recreation.



**GOFINGERLAKES™**  
FINGER LAKES LAND TRUST

## FLLT.ORG/MAP

Discover dozens of free nature preserves  
of the Finger Lakes Land Trust



## WE NEED YOU!

Help us save more land and water by  
donating and volunteering



**GIVE & JOIN**  
[FLLT.ORG/GIVE](http://FLLT.ORG/GIVE)



**VOLUNTEER**  
[FLLT.ORG/VOL](http://FLLT.ORG/VOL)



To conserve forever the lands  
and waters of the Finger Lakes  
region, ensuring scenic vistas,  
local foods, clean water, and  
wild places for everyone.

The Finger Lakes Land Trust (FLLT) is a nonprofit conservation organization working across 12 counties in Central New York. Since 1989, we have worked cooperatively with landowners and partners to protect some of the most treasured natural areas and open spaces in these vital watersheds. FLLT manages dozens of conservation areas that are free and open to the public for quiet recreation year-round. We also hold easements on protected lands that remain in private ownership. FLLT is supported by members, and you can help us do more!

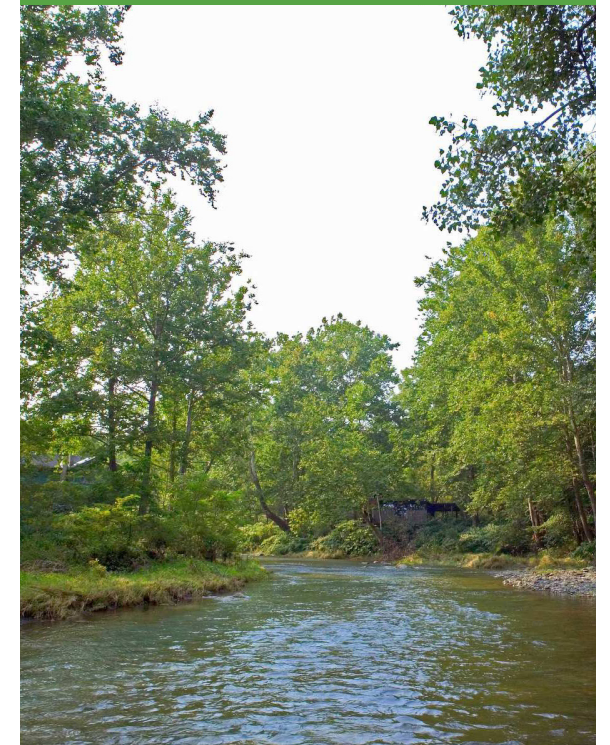
### FINGER LAKES LAND TRUST

202 East Court Street, Ithaca, NY 14850  
[fllt.org](http://fllt.org) /facebook /instagram /twitter  
(607) 275-9487

## SALMON CREEK BIRD SANCTUARY

LANSING, NY

## MAP & GUIDE



**CONSERVED FOREVER  
OPEN TO ALL**

[FLLT.ORG/SALMON](http://FLLT.ORG/SALMON)





**Acreage:** 40 acres



**County:** Tompkins



**Trails:** n/a

The Salmon Creek Bird Sanctuary is in one of New York State's Important Bird Areas (IBA) as identified by the National Audubon Society.

## NATURAL HISTORY

In 1998, 48 pairs of Cerulean Warblers were found around the preserve, along with Scarlet Tanagers, Hooded Warblers, Baltimore Orioles, and a host of other birds. Large tracts of uninterrupted forest are crucial for the protection of Cerulean Warblers and other neotropical migrants. Here the forest of tall cottonwood, sycamore, willow, and locust has a dense understory of shrubs and herbaceous vegetation. Salmon Creek and several tributaries meander through the preserve, often changing course during floods or following logjams.

## HISTORY

Thanks to an anonymous donor and a collaboration between the Finger Lakes Land Trust and the Cornell Laboratory of Ornithology, FLLT purchased the land for the preserve—one parcel in 1998, two more in 2000. FLLT hopes to protect additional lands in the IBA in the years ahead.

### ACTIVITIES

**Birdwatching:** *To help protect the sanctuary's birds, there are no trails on the preserve. However, many of the birds can be seen and heard easily while walking slowly along the road.*

### DOGS

Keep your dog under control at all times

### HOURS

Open dawn to dusk all year

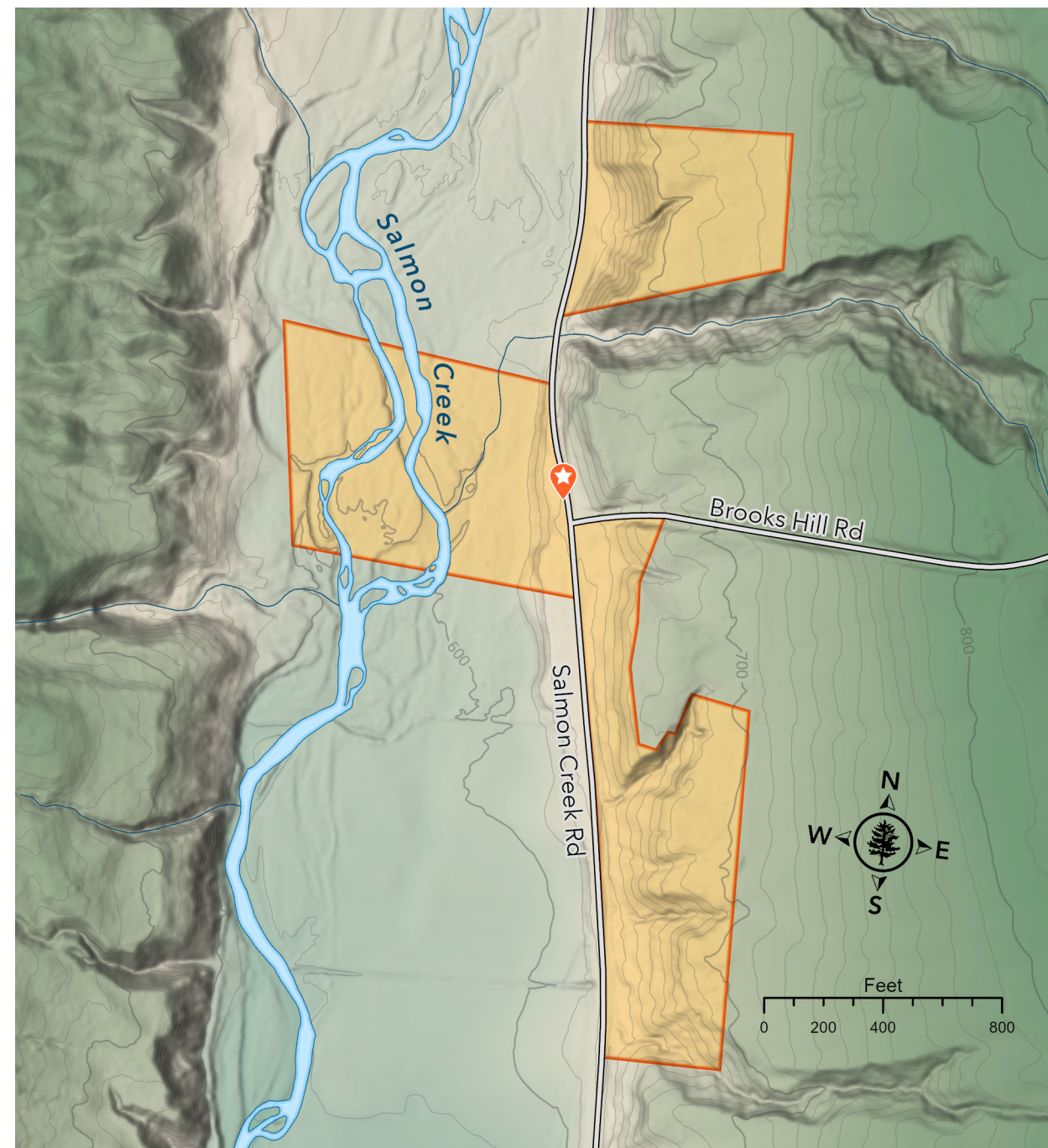
### POLICIES

See [fllt.org/policies](http://fllt.org/policies)

### LEARN MORE

See [fllt.org/salmon](http://fllt.org/salmon) for history, photos, and an interactive map.

PHOTOS: (COVER) BILL HECHT, (L) CHRIS RAY, (R) CHRIS RAY



**There are no trails at Salmon Creek Bird Sanctuary at this time.**



**Pull-off Parking Only**



**Nature Preserve Boundary**