

Where can you  
find the very  
best hikes,  
bikes, paddles,  
and outdoor  
adventures in the  
Finger Lakes?



[gofingerlakes.org](http://gofingerlakes.org)

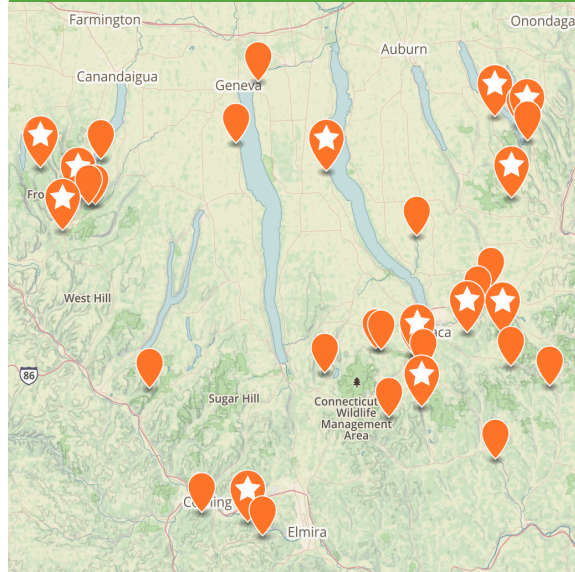
"Go Finger Lakes" is a mobile-ready web site with an interactive map showing over 650 miles of trails. It is a free public service of the Finger Lakes Land Trust promoting conservation and recreation.



**GOFINGERLAKES™**  
FINGER LAKES LAND TRUST

**FLLT.ORG/MAP**

Discover over 35 free nature preserves  
of the Finger Lakes Land Trust



**WE NEED YOU!**

Help us save more land and water by  
donating and volunteering



**GIVE & JOIN**  
[FLLT.ORG/GIVE](http://FLLT.ORG/GIVE)



**VOLUNTEER**  
[FLLT.ORG/VOL](http://FLLT.ORG/VOL)



To conserve forever the lands  
and waters of the Finger Lakes  
region, ensuring scenic vistas,  
local foods, clean waters, and  
wild places for everyone.

The Finger Lakes Land Trust is a nonprofit conservation organization working across a 12-county region in Central New York. We have worked cooperatively with landowners and partners to permanently protect over 26,000 acres of treasured natural areas and scenic farmlands. The Land Trust owns and manages more than 35 conservation areas that are open to the public for quiet recreation. We hold over 150 easements on protected lands that remain in private ownership. FLLT is supported by members, and you can help us save more land.

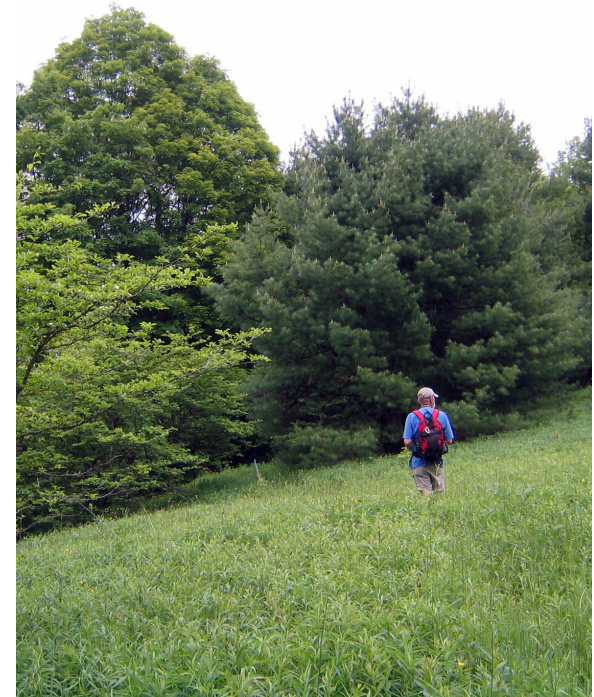
**FINGER LAKES LAND TRUST**

202 East Court Street, Ithaca, NY 14850  
[fllt.org](http://fllt.org) /[facebook](#) /[instagram](#) /[twitter](#)  
(607) 275-9487

**ROBERT AND  
MARY CARVER  
KING NATURE  
PRESERVE**

RICHFORD, NY

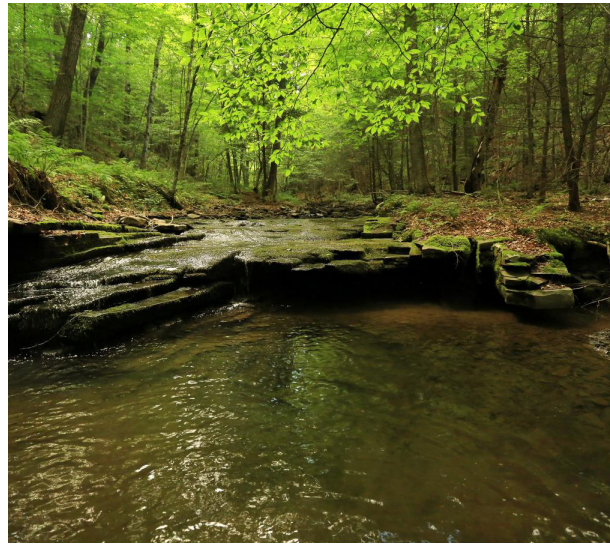
**MAP & GUIDE**



**CONSERVED FOREVER  
OPEN TO ALL**

[FLLT.ORG/KING](http://FLLT.ORG/KING)





 **Acreage:** 161 acres

 **County:** Tioga

 **Trails:** 1.25 miles

The King Preserve is off the beaten path and offers solitude in a wild natural area for those that don't mind trails that are a bit less improved.

## NATURAL HISTORY

The southern section slopes down to a beautiful tributary of the East Branch of Owego Creek. Habitats on the south side of the stream range from a small, long-abandoned farm field and young hardwood forest to mature forest dominated by hemlock, birch, white pine and red oak. Especially lovely are the steep, hemlock-clad sides of the ravine. The preserve's forests have a well-developed understory of young trees and shrubs, as well as herbaceous plants. This structure is especially attractive to a wide array of bird species.

## HISTORY

The preserve was donated by Robert and Mary King in 2001. The Kings had searched for a piece of land to buy and protect. They found this beautiful place, south of the Village of Richford, and have ensured that it will remain unspoiled and available for wildlife and quiet public recreation.

### ACTIVITIES

Hiking  
Cross-Country Skiing  
Snowshoeing  
Birdwatching

### DOGS

Keep your dog under control at all times

### HOURS

Open dawn to dusk all year

### POLICIES

See [fllt.org/policies](http://fllt.org/policies)

### LEARN MORE

See [fllt.org/king](http://fllt.org/king) for more history, natural history, photos, and an interactive map.

PHOTOS: (COVER) FLIT, (L) BRIAN MALEY, (R) BRIAN MALEY

