



ANNUAL REPORT

2024-2025 • CONSERVED FOREVER

FLLT BOARD OF DIRECTORS

Karen Meriwether
Chair of the Board

Beth Dann
Vice-Chair

Adam Boyko
Secretary

Wade Sarkis
Treasurer

Charles T. Driscoll

Lynn Eusden

David Fernandez

Maria Fernandez-Gaige

Dan Fisher

Suzanne Hunt

Ed McGraw

Kevin Parker

Marjory Rinaldo-Lee

Jan Suwinski

Fred Van Sickle

Jim Walsh

Suan Hsi Yong

PRESIDENT'S COUNCIL

Dave Birchenough
Chair

John Alexander

Josh Allyn

Burch Craig

Bill Eggers

John Fitzpatrick

Phil Greenberg

Holly Gregg

Barb Hamlin

John Hinchcliff

Lynn Leopold

Sean O'Keefe

Dick Raines

Lindsay Ruth

Rebecca Schneider

Stu Schweizer

Myra Shulman

David Stilwell

Doug Sutherland

Kristin Swain

Patty Weisse

Marianne Young



Dear Friends of the Finger Lakes,

The Finger Lakes Land Trust is pleased to present the following report highlighting our accomplishments over the past fiscal year. With your support, we protected 1,668 acres, 4,674 feet of lakeshore, and 71,222 feet of streambank during this time. Our dedicated members, volunteers, and community partners helped us open new trails, restore sensitive ecosystems, invest in the future of the Finger Lakes, and so much more.


Now in our 36th year, we have protected over 34,000 acres across the region, including the establishment of more than 45 nature preserves with 55 miles of hiking trails and 196 conservation easements on lands that remain in private ownership.

We are fortunate to have the strong leadership of those who sit on our board of directors and various committees, providing oversight and ensuring our long-term success. Our growing staff meets the challenges of each day with energy and determination, and the results speak for themselves.


Thank you, from each and every one of us at the Land Trust! We are forever grateful to you for your commitment to conservation in the Finger Lakes. We look forward to what we can accomplish together in the coming years.

With gratitude,




Andrew Zepp
President




Karen Meriwether
Board Chair



1000+
acres
preserved
each year



489
parcels conserved
permanently

we've spent



36
years

protecting lands & waters

6 miles



of protected
lakeshore

750 miles of



FLLT by the Numbers



45+
publicly
accessible

nature preserves

55.9



miles of hiking trails
ready to explore

196

conservation
easements




signature

200



volunteers



34,663
acres
protected
forever



Photo: Chris Ray

Nature Preserves

Shotwell Brook Conservation Area

With strong support from the local community, the Land Trust secured 101 acres of fields, wetlands, and woods adjacent to the Village of Skaneateles in Onondaga County. Featuring prominent frontage on U.S. Route 20 and more than 1,000 feet of streambank on Shotwell Brook, the land will be protected as a nature preserve, to be opened after ecological restoration and public access improvements are made. The Land Trust will develop two miles of walking paths, including a universally accessible loop trail, to connect residents and visitors to nature.

Staghorn Cliffs Acquisition

At the south end of Skaneateles Lake, in the town of Spafford, Onondaga County, the Land Trust purchased 850 feet of shoreline that includes the southern half of Staghorn Point along with 15 acres of adjacent wooded hillsides. This acquisition extends the organization's protected shoreline to 3,000 feet in this area, further safeguarding Skaneateles Lake. The property will be owned and managed by the Land Trust as a nature preserve accessible by water only, due to the hazardous nature of the steep hillsides above the cliffs.



Photo: Chris Ray



Photo: Chris Ray



Photo: Bill Hecht

Conservation Easements

A New Lakeshore Park for the Village of Aurora

The creation of a new public park featuring 1,100 feet of Cayuga Lake shoreline, along with four acres of adjacent upland, is underway thanks to a partnership between the Land Trust and the Village of Aurora. Previously part of Wells College, the parcel was acquired by Land Trust member Grace Bates with the intent of creating the park for public enjoyment. Before donating the property to the Village, Grace donated a conservation easement to the Land Trust, which includes provisions for public access, as well as the protection of scenic views and wildlife habitat.

Over 400 Acres of Scenic Farmland in Yates County Protected

The Land Trust protected 406 acres of scenic farmland in the town of Milo, Yates County, with a perpetual conservation easement. The farm is owned by Robert and Kay Henderson and operated by Robert and his son, Matthew Henderson, who grow a variety of crops, including corn, wheat, soybeans, and clover. Funds for the project came from New York State's Farmland Protection Implementation Grants Program.

Land Donation Creates Additional Funds for Conservation

Thanks to the generous donation of 86 acres by the estate of Marjorie Morris, a diverse property in Manchester, Ontario County is permanently protected through a conservation easement. The property contains productive farmland, wooded hills, and several wetlands and streams. To create buffers around the streams, two acres of farmland were retired and planted with 700 native trees and shrubs through a partnership with The Nature Conservancy.

10,000 Feet Along Fall Creek Secured

With support from New York State's Water Quality Improvement Project program, the Land Trust secured 260 acres in the town of Summerhill, Cayuga County. The property features 10,000 feet of frontage on Fall Creek, the source of Cornell University's drinking water supply and the largest tributary to Cayuga Lake. Funds were used to purchase a perpetual conservation easement to protect the land, a diverse mix of upland forest, wetlands, and agricultural fields.

Additional Protections in the Skaneateles Lake Watershed

The Land Trust secured a conservation easement on 116 acres owned by Don and Anna DeWitt in the town of Niles, Cayuga County. Their property includes 3,000 feet of frontage on Bear Swamp Creek, a major tributary of Skaneateles Lake. A significant portion of the funding for this project came from the New York State Water Quality Improvement Projects program.

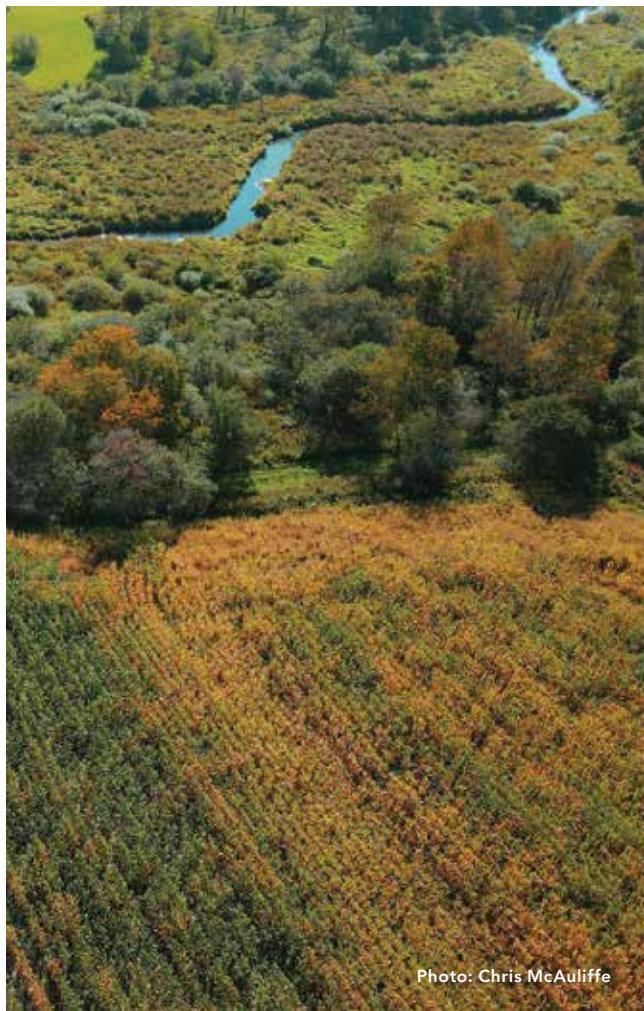


Photo: Chris McAuliffe



Photo: Chris Ray

Expanding Public Lands

Land Gift Ensures Integrity of James Kennedy State Forest

The donation of 108 wooded acres to the Land Trust from the estate of David Connolly in Virgil, Cortland County, will safeguard wildlife habitat, create new public recreational opportunities, and protect water quality in Owego Creek. The “inholding” property is bordered on all sides by James Kennedy State Forest and serves as a buffer to the Finger Lakes Trail, which traverses its southern boundary. The Land Trust intends to transfer the parcel the New York State Department of Environmental Conservation (DEC) as an addition to the state forest.

Over 1,600 Feet Along the Chemung River Protected

The Land Trust purchased 24 acres featuring 1,680 feet of frontage along the Chemung River in the town of Chemung. Located off of County Route 60 in Chemung County, the wooded property contains habitat for roosting Bald Eagles and migratory birds. The Land Trust intends to transfer the parcel to the DEC for future use as a public conservation area and fishing access site.



Photo: Chris Ray

Partnership Secures Land Adjacent to the Black Diamond Trail

The Land Trust purchased 23 acres in the town of Ulysses, Tompkins County, from the Cayuga Nature Center. In partnership with the New York State Office of Parks, Recreation and Historic Preservation (OPRHP), the parcel will become part of the popular Black Diamond Trail. OPRHP is interested in creating a midway access point on the property with parking, restroom facilities, and a water fountain.

Expanding the Emerald Necklace

With over 11,000 acres, Connecticut Hill Wildlife Management Area is an important component of the Emerald Necklace, a proposed greenbelt linking 50,000 acres of existing conservation land in an arc around Ithaca, from the Finger Lakes National Forest in the west to Hammond Hill State Forest in the east.

The Land Trust purchased 30 wooded acres adjacent to Connecticut Hill in the town of Catharine, Schuyler County. The property shares a boundary with a picturesque section of the Finger Lakes Trail, which follows along Cayuta Creek, a tributary of the Susquehanna River. The organization aims to transfer the parcel to the DEC as an addition to the WMA, expanding recreational opportunities in this area.



Photo: Chris Ray



Photo: FLLT



South end of Canandaigua Lake
Photo: Bill Hecht

Protecting Water Quality in Canandaigua Lake

In the town of Italy, Yates County, 34 acres containing numerous ephemeral creeks that flow down the forested hillsides at the south end of Canandaigua Lake are now protected. The parcel is situated between the Land Trust's Great Hill Preserve/Nundawao and the High Tor Wildlife Management Area and shares a boundary with each. These uplands stabilize soil and prevent erosion and sediment loading, and their waterways flow into the West River, the largest tributary to the lake. The Land Trust aims to transfer this property to the DEC as an addition to the High Tor WMA.

Bear Swamp State Forest Protections

The Land Trust purchased 218 acres adjacent to Bear Swamp State Forest in the town of Sempronius in Cayuga County. The property encompasses wetlands, upland forests, and 1,755 feet of frontage on Bear Swamp Creek. The Land Trust plans to transfer approximately 141 acres of this parcel to the DEC as an addition to the state forest. Approximately 77 acres of primarily agricultural land will be conserved through the use of a perpetual conservation easement.



Photo: Matt Sitler

Connecting Conservation Lands in the Hemlock to High Tor Corridor

The Land Trust purchased 116 acres of forested hillsides in the town of Canadice, Ontario County, just west of the Honeoye Inlet Wildlife Management Area. The property is located in the heart of the Hemlock to High Tor corridor, a landscape extending from Hemlock Lake in the west to the High Tor Wildlife Management Area at the south end of Canandaigua Lake. The organization intends to transfer this parcel to the OPRHP as an addition to the adjacent Harriett Hollister Spencer Recreation Area, expanding outdoor recreational opportunities in this growing complex of conserved land.




Photo: Nigel Kent

Securing Scenic Vistas in Naples

A key parcel within the Canandaigua Lake watershed is now permanently protected after the Land Trust moved quickly to purchase 122 acres in Naples, Ontario County. The site features dramatic glacial features and a well-known scenic vista on State Route 21. In addition to its scenic qualities, the property also provides habitat for grassland birds and contains approximately 5,000 feet of frontage on tributaries to Naples Creek, which drain directly into Canandaigua Lake. The Land Trust intends to transfer the property to the DEC to be managed as a satellite of the nearby High Tor Wildlife Management Area. An interest-free loan from an anonymous donor made this purchase possible.



STEWARDSHIP & RESTORATION

ur stewardship staff held 19 volunteer workdays this past fiscal year, hosting over 150 “Trailblazers” who contributed 389 volunteer hours to a variety of trail building and nature preserve maintenance activities. We couldn’t do it without you!

In celebration of Earth Day, staff and volunteers removed 900 pounds of garbage, 30 tires, scrap metal, and recycling from a newly acquired conservation area on the shores of the Chemung River. Other projects included removing invasive species to improve grassland bird habitat, building footbridges and benches, and creating trails on a new nature preserve in the Keuka Lake watershed.

In partnership with the New York State Office of Parks, Recreation and Historic Preservation, the Land Trust celebrated the formal opening of a 140-acre addition to Robert H. Treman State Park in the town of Enfield, Tompkins County. Known as Margaret’s Woods, the parcel was donated to the organization in 2022 by the late Margaret Bald, a Tompkins

County resident whose family had owned the property since 1950. Margaret’s Woods can now be accessed from a trailhead on Stonehouse Road in Enfield and is open year-round from dawn to dusk.

At the Shotwell Brook Conservation Area in Skaneateles, the Land Trust converted cropland to grassland and pollinator habitat through a partnership with the U.S. Fish and Wildlife Service’s Partners for Wildlife Program.

And lastly, the Ontario County Soil & Water Conservation District constructed four new vernal pools at the Land Trust’s Canandaigua Vista Nature Preserve. In addition to diversifying wildlife habitat, the pools will protect water quality in Canandaigua Lake by capturing runoff during storms and allowing rainfall to gradually recharge groundwater supplies. We are grateful to all our volunteers, partners, and board and committee members who dedicate their time and resources to protecting and stewarding these lands and waters!



COMMUNITY ENGAGEMENT & EDUCATION

The Land Trust strives to share information about our conservation work, build relationships to achieve common goals, and raise awareness of the natural world.

To educate our communities about the natural history of our region, the Land Trust hosted 13 events on topics ranging from bird and tree identification to wildlife tracking and nature photography. These programs, presented by expert volunteer naturalists, are part of the Talks & Treks program and are offered free of charge. In addition, Land Trust staff provided guided hikes for participants from the Greater Ithaca Activities Center's

Outdoor Adventure Camp, the New York Statewide Senior Action Council, Finger Lakes Community College, and Ithaca College.

To engage landowners, local government agencies, and members of the Finger Lakes community and beyond, our Land Protection team delivered presentations across the region to audiences associated with Cornell Cooperative Extension, Ontario County Soil & Water Conservation District, New York Forest Landowners Association, Cornell Small Farms Initiative, and more. To learn about future opportunities, visit flt.org/events.

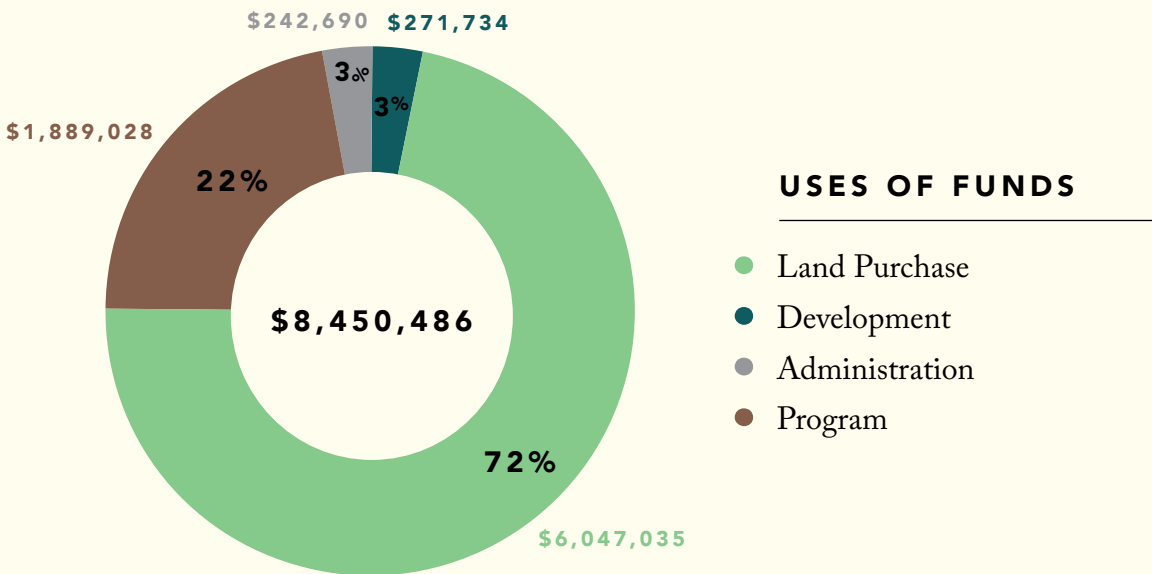
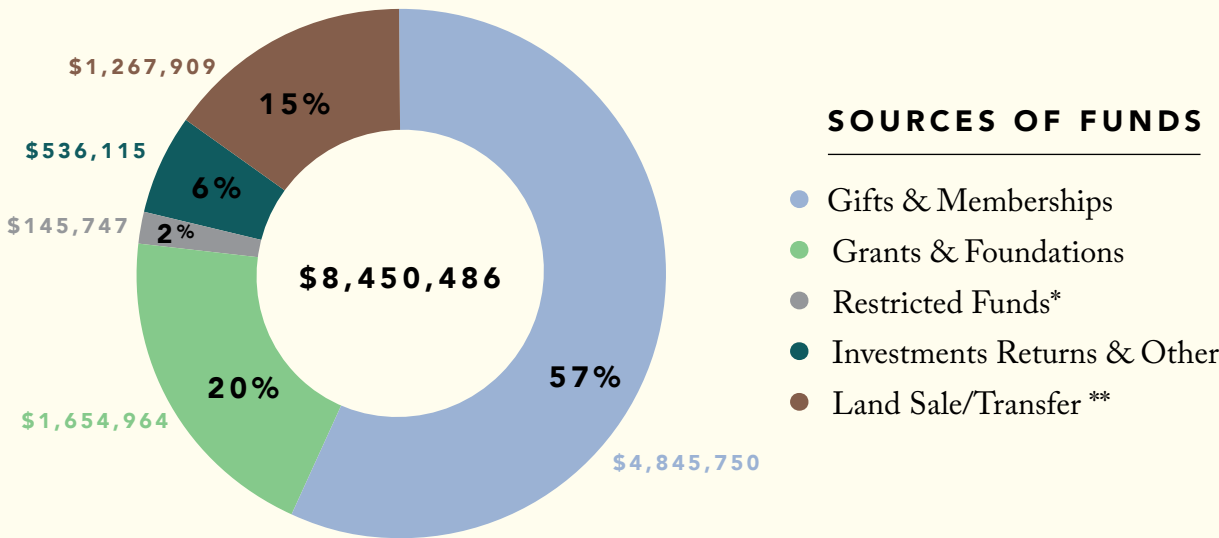
A big THANK YOU goes to all our volunteers who helped us build trails, manage wildlife habitat, and improve public access to the Land Trust's conservation areas!

we work in

**6,285
square
miles**

across 12 counties

FINANCIALS 2024–2025



* Funds designated for Land Purchase from previous fiscal years.

** Lands added to public holdings or sold subject to a conservation easement per prior agreement with donor.

*Unaudited financials for fiscal year ending June 30th, 2025.
Does not include the value of donated land or conservation easements.*

Thank You to Our Supporters!

As part of our efforts to better recognize your impact and align our donor reporting with the organization's overall reporting, we've transitioned to a fiscal year cycle (July 1–June 30). To ensure no gifts are missed during this change, this year's donor roll includes two time periods: January 1–December 31, 2024, and January 1–June 30, 2025. This allows us to acknowledge

all donors who gave \$250 and above, including those who gave in both windows. Going forward, all donor recognition will reflect giving within our fiscal year.

Given space limitations and to maximize the impact of donations that support our mission, we are unable to highlight every contribution. We remain grateful for gifts of all sizes and use them wisely to protect land and water across the region.

This report acknowledges those who generously donated land, conservation easements, and in-kind gifts, or gave \$250 or more in 2024.

LAND, CONSERVATION EASEMENT, AND REAL ESTATE DONORS:

John Hatch and David Henderson
Robert and Kay Henderson
William (Bill) Hall

\$250,000+
Anonymous (1)

\$100,000+
Anonymous (3)
Bill Allyn
David and Amy Allyn
Joshua Allyn
Central New York Community Foundation
Dan Karig and Joane Molenock
New York State Department of Environmental Conservation/
Land Trust Alliance
The Raines Family Fund
Dave and Brenda Rickey
Marcy Rosenkrantz and Daniel Konowalow

\$20,000-99,999
Anonymous (5)
Joel D. and Jeanne Baines
Roger and Diane Cass
John and Louisa Cohan
William Eggers and Deborah McLean

The Firefly Fund
David Henderson and John Hatch
Ann Hinchcliff
Ted and Joan Hullar
John and Josephine Ingle
Estate of Elizabeth Kirchner
James Lassoie and Ruth Sherman
Laurel Gibbs Memorial Fund
The Lilac Foundation
Malcolm C. Damuth Foundation
Karen Meriwether and Thomas Snow
Laurel Moranz and John MacAllister
Park Foundation Inc.
Norma Platt
Mary and Charlie Scott
David and Dawn Wayne

\$10,000-19,999
Anonymous (3)
Susan C. Aiello and Larry Aiello, Jr.
Allie and Mark Allyn
Nancy Briggs
John and Marcia Browning
Directors Philanthropy Fund at
Tompkins Charitable Gift Fund
Ed and Robin Dubovi
Larry Blume and Maralyn Edid
Edward and Verna Gerbic
Family Foundation
Eggers Family Charitable Fund
Emil Muller Foundation
Alan and Lynnette Eusden
Marty and Cathy Gardner
Holland Gregg and Patience Brewster
The Hannah Fund
Doug and Kip Hargrave
Thomas Kather and Penelope Wickham
Laura Larson
The Makowski Trust
The Marilyn Lichtman Foundation
David and Patricia Maule
Charles and Victoria McClure

Douglas and Barbara McIlroy
Valerie Newell and Tim Smith
Sean and Laura O'Keefe
Marjory Rinaldo-Lee and David Lee
Estate of John Semmler
Tioga Co. Soil and Water
Conservation District
Tompkins County
Margaret Usdansky
Jacob and Grace Vorreuter
Peggy Walbridge
Paul and Lori Whitstock
Josie Yunis and Marty Taylor

\$5000-9999
Anonymous (3)
John Alexander
Roland and Tacie Anderson
Mary Brady
Mark and Dorothy Bruns
Stephen and Sherie Carroll
Cayuga Bird Club
The Cayuga Foundation
Barbara Chase
Scott Conking and Tom Wall
Beth and Matthew Dann
Sid Devorsetz
The Edward and Helen Oppenheimer
Foundation
Kim Edwards
F. Claire and James Fisher
Mark R. and Catherine A. Foerster
Elizabeth P. Gordon
Mark Gould
Kenneth and Barbara Horowitz
Maisie Houghton
Joseph F. Karpinski Sr. Foundation
Debbie Kamarck
Jim and Sara Kersting
Barbara S. Lake
Lloyd Lill
Jennifer and Daniel Loucks

Hadley Lundback
 Gerald Morsello and Elaine Rees
 Nancy Neal
 Susan Peck
 Anne Posel
 David Rakov
 David and Susan Ruppert
 Nancy Sands
 Charles P. and Nancy C. Scholes
 Stanley Metcalf Foundation
 Vitreus Foundation
 Bill and Jennifer Warning
 Susan Westlake
 Carolyn and Charles Whitfield
 Linda Williams
 Linda Woodard

\$1000-4999
 Anonymous (11)
 John and Marilyn Abbott
 Lee and Yolanda Adrean
 Barbara and David E. Allardice
 Allyn's Creek Foundation
 Cort Anastasio
 Barbara Andersen and Andrew Clark
 Katherine Anderson and Max Pensky
 Douglas Antczak and Wendy Robertson
 Ben Arthur
 The Arthur Vining Davis Foundations
 Neil and Maggie Atkins
 Marilyn N. Baader
 Tom Babcock
 Roger and Whitney Bagnall
 Dawn Bahar-Goellner
 Dan and Pat Baker
 Keith Batman and Barbara Post
 Carl F. Battaglia
 Gwen Beck
 Larry and Annette Bell
 Mary Berens and Paul Feeny
 Gary and Fran Bergstrom
 Mary M. Berk
 Thomas Bersani and Joan Christy
 Betty A. Lewis University
 Environmental Charitable Trust
 Thomas Björkman and Ann Raffetto
 Margot Bliven and Richard Rosenberg
 Bernd Blosssey and Victoria Nuzzo
 Thomas and Barbara Blumer
 Richard and Kathleen Bowles
 Adam and Kelly Boyko
 Mary Brady
 Robert Brashear and Jan Pople
 The Honorable Phillip Bredesen
 and Ms. Andrea Conte
 Jeff and Sandy Bricker
 Marjory Brooks
 Gordon Brott
 Larry and Laura Buffam
 Tom Butler and Stephanie Behler
 Richard Buttny
 James and Terry Byrnes
 Catherine Caneau
 Ted and Susan Carman
 Edith Cassel
 Larry and Mary Helen Cathles
 Brian Chabot and Kathleen Rasmussen
 Jim Chamberlain and Karen Dyson
 Michael Charnoky and Kathi Borgmann

J.A. Chisholm
 David Ciarletta
 Nancy Cladel
 William and Martha Cole
 Christine and Frederick Collins
 Jeff R. Collins and Gisela Konrad
 Joseph and Katherine Compagni
 John and Karen Confer
 Marguerite Coniff-Kane
 John Coughlin
 Edwin A. Cowen and Ann
 Lewandowski
 Gregory Craig
 Douglas and Norah Cramer
 Bruce and Leslie Cutler
 D.E. French Foundation
 Paul and Mary Dangler
 Susan Daniel
 Betsy and Dick Darlington
 Theresa and Chris Daum
 Peter J. Davies and Linda DeNoyer
 Derek and Rebecca Davis
 Steven and Elizabeth Davis
 Dr. Robert Jeffrey Dean and
 Dr. Barbara Claas
 William and Barbara Dean
 James DeKay
 Don and Lynn Delaney
 Judy Dobles and Barry Akin
 Samuel Donovan and Carol Green
 Gary and Linda Dower
 Jeff and Jane Doyle
 Clover M. Drinkwater
 Charles and Kim Driscoll
 Karin Driscoll
 Richard Dudley and Carol Colfer
 Mary Jane and Brian Dugan
 David Duggan and Lynn Cleary
 Dwight W. Winkelman Foundation
 Forrest and Sara Earl
 Guy H. and Nancy P. Easter
 Brad Edmondson and Tania Werbizky
 Michael and Harriet Eisman
 Maria Eisner
 Sally and Tim Eller
 Herb and Connie Engman
 Chris and Elaine Engst
 James C. Ermer and Christine Gabos
 George Ewing, Jr.
 Kevin and Catherine Fager
 Cornelia Farnum and Jack Booker
 Tracy Farrell and Ronald Chapman
 Bill and Nancy Feinstein
 David Fernandez and Elizabeth Lawson
 Maria Fernandez-Gaige
 Stephen and Maria Ferrel
 Edward Finegan
 John and Molly Fitzpatrick
 James Flaws and Marcia Weber
 Donna Fleming and Frederik Kaufman
 Paul and Carrie Floreck
 David Foster and Kathleen Jacques
 Gene and Angela Foster
 John Fox
 James and Ellen Fralick
 Ron and Rose Ann Gay
 Gaylor Family
 Kelly and Edward Gilligan
 Phillip Gioia and Catherine Willsey

Lawrence Glickman and Jill Frank
 Carla Golden
 Robert G. Good
 Karen and David M. Gorgonzola
 Michael S. and Rita Gow
 David Graham and Joan Thomsen
 Bradley and Mary Grainger
 Joe and Marie Grasso
 Jane E. Graves
 Phil and Jessica Greenberg
 The Greene-Milstein Family
 Foundation
 Barbara R. Hamlin
 Rebecca Hansen
 Harpoon Fund of the Community
 Foundation of Tompkins County
 Ellen Harrison
 Sue Hemsath
 Maureen Hier
 L. Bruce Higgins
 John and Robin Moss Hinchcliff
 Michael and Kathleen Hoar
 Teresa Hoercher
 Eva and Roald Hoffmann
 Holbrook R. and Sarah M. Davis
 Foundation, Inc.
 Emily and Edward Holmes
 Mike Hopcroft
 Roger and Ruth Hopkins
 Robert Horn, Jr. and Joan Horn
 Rob and Claire Howard
 Reed and Bryn Huegerich
 Martha Hueter
 Isabel Hull
 Kenneth Hyde and Nellie Ramsden
 Mark Jauquet and
 Mickie Sanders-Jauquet
 Kurt Jirka and Barbara A. Knuth
 David and Beverly Jones
 Donna and Andrew Kaiser
 Kevin and Leann Kanda
 Fredric and Marsha Kardon
 Jeff Katris
 Matthew Keesan
 Bruce and Linda Kenan
 David and Sherill Ketchum
 Peter Kirchner
 Phil Koons and Kathy Earnest-Koons
 Michael Kotlikoff and
 Carolyn McDaniel
 Steve Kress and Elissa Wolfson
 Leanna Landsmann and Chip Block
 Bruce and Heather Lane
 Gregg and Sue Layer
 Paul and Kathleen Leone
 Lynn Leopold
 Gene Likens
 John Lonam and Anne Olmstead
 Lonam
 Harriet London
 Dr. C. Vivian Lorenzo and
 Mr. Marek Przezdziecki
 Carol MacNeil
 Beatrice Magre
 Daniel and Kirsten Mahar
 Kenny and Kelly Makosch
 Peter and Beth Marks
 John and Candace Marsellus
 David and Linda Marsh

John Marshall and Cindy Callahan
 Ed Marx and Sherry Nichols
 Martha Mayo
 Maureen McCarthy
 Kevin McCormick and
 Catherine Cantwell
 Amy McCune
 Douglas and Nancy McDowell
 James McGarry
 Edward and Charlene McGraw
 Marie McKee and Robert Cole
 John P. and Elizabeth Y. McKinnell
 Paul and Jennifer McKinnell
 Eben McLane
 David and Meloney McMurry
 James Miller
 Toby and Jessica Millman
 Janice Monago
 Christopher T. Moore
 James and Julie Moore
 Ken Kempfhuus and Diane Morton
 John and Janis Moses
 Sally Napolitano
 Rick and Mayumi Naro
 Barb Neal and Sarah Davis
 Sally Neumann
 Beth Newell
 Deborah O'Connor and Peter Lepage
 William Olbricht
 Pike and Rosemarie Oliver
 Frederik Osborne
 Mary Ann Oyer
 Barbara Page
 Catherine Penner
 Perigee Charitable Fund
 Paula Peter and Mike Ward
 Michael Peterson
 Robert and Mabelle Pizzutiello
 Beth Plocharczyk and Geoffrey
 Callander
 Richard Plympton
 Sue Poelvoorde and Don Murray
 Mont and Kate Pooley
 Lloyd Powell
 Chris Proulx
 Donald and Robin Pulver
 Cheryl and David Purvis
 Dave and Claudia Radin
 Chase Raines
 Nate Raines
 Andrew and Nancy Ramage
 Michael Rappaport
 Sara L. Recktenwald
 Jim and Meg Reed
 Dennis and Elizabeth Regan
 Richard C. Reichman and
 Lisa Demeter Reichman
 Thomas Riley
 Nancy Robbins
 Mary and Bill Roberts
 Buzz and Gretchen Roberts
 Nan Rohrer
 Jean and Betty Rowley
 Greg and Betsy Russell
 Lindsay Ruth and Perry Dimmick
 Nick Salvatore and Ann Sullivan
 Linda and Larry Sampson
 Wade and Joscelyne Sarkis
 Steven and Kelly Scheinman

Kris Scholl and Brooke Oropallo
 Stuart and Lucy Schweizer
 Sigi Schwinge
 Donna Scott
 Myra Shulman and James Morin
 Jutta Siefert Dudley and Paul Dudley
 Jonah and Kate Simons
 John and Bonnie Sirianni
 Gregory and Amanda Slisz
 Andrew Smith and Nicole Rossi
 Jason A. Sokoloff
 William and Molly Spalding
 Jack P. and Patty Starke
 Robert and Josefa Stathis
 Laura Stenzler and Ton Schat
 Lauren and Julia Stiles
 Alan Stone
 Charlie Strohman and Sheila Stone
 Georgia Stormes and Irv Beimler
 Lucille A. Straub
 Douglas B. Sutherland and
 Nancy Kramer
 Hilary and Frank Swain
 Charles and Kristin Swain
 Peter and Lisa Sykes
 Marie Terlizzi and Robert Dobbs
 James Terwilliger and Ellen Coyne
 Richard Thomas
 Bruce and Katie Thompson
 Jean M. and Roger Thompson
 Margaret Thompson
 William Thompson
 Liz Thorndike
 Joan E. Thornton, M.D.
 Kevin and Sharon Todd
 Joyce Toher
 Paul and Glenda Torrence
 Tony and Mary Tripeny
 Chantal Poister Tusher
 Mary Jane Uttech
 George D. Van Arsdale and
 Elizabeth Osta
 Judy Varney
 John and Jean Vincent
 Volker Vogt and Carla Marceau
 The Judy and Erik von Bucher
 Advised Fund at the Rochester Area
 Community Foundation
 Walbridge Family Foundation
 James and Diane Walsh
 Cory Ward
 John Wasileski
 Wendell Weeks and Kim Frock
 Marc and Karen Weinberg
 David A. Weinstein and Christina Stark
 Patty Weisse and George Thomas
 Gillett and Paddy Welles
 Norma Jo Werner
 Jim and Kris West
 Peter White and Mary Soggi
 Scott Wilkerson
 Donald D. Wilson
 Joan M. Winters
 Christopher Wirth
 Bruce and Jan Wood
 Mark and Karen Wood
 Stephen and Janet Wyckoff
 Stephen and Amy Yale-Loehr
 Suan Hsi Yong

David and Bridget Young
 Marianne and J.D. Young
 Bill and Valerie Yust
 Andrew and Rocio Zepp
 Thomas Zollo and Sharon Renchof

\$500-999
 Anonymous (6)
 Ferris Akel III
 Dana and Linda Allison
 Gerald and Betsy Archibald
 Harry Ash and Rebecca Clark
 Robert Aumick
 Donald and Roberta Ayling
 Bill Banaszewski and Michele Howland
 Richard Barrett and Anne Zimmer
 Grace Bates
 Henry and Helga Beck
 Roger Beck
 Brian and Kimberly Bennett
 James and Betty Bird
 Martha Blair
 John and Diana Bome
 Claudia and Bennie Boreman
 Bruce Borglum and Joanne Searle
 David Breit and Maria Aslani-Breit
 Anthony and Janice Bretscher
 Peter Bronski
 Shirley Brown and Rich Goldman
 Anne Buehler
 James Burger
 Winthrop and Barbara Burr
 Jill and Brian Cadogan
 Hugh and Barbara Chenoweth
 Robert Cockram
 Lisa Colacurcio
 Thomas Cole
 Charlotte Cook
 Edward and Gail Cordes
 Tim and Margie Creamer
 Bobby and Susan Creed
 Sara Culotta
 Douglas P. and Martha Daniels
 Alex and Lauren Dann
 Jean Darlington and Eduardo Marchena
 Sandra Deagman
 Bob and Terry Dewitt
 David DiRaddo
 Jennifer DiRenzo
 Mary Dolan
 Alan Dolmatch
 Richard Dubois
 Michael and Linda Duttweiler
 Linda M. Dworaczyk and
 Charles R. Wochele, Jr.
 Robert and Beverly Dyer
 Barbara Egtvedt
 Stephen Emlen
 Mark Fairchild and Lisa Reniff
 Mary Fessenden
 Finger Lakes Land Trust
 Charitable Fund
 Caryl Flickinger
 Lindsay France Simanis and
 Erik Simanis
 Robert Frank and Ellen McCollister
 Albert F. Freihofer
 Nancy and David Frick
 David and Sharon Gerber

Brooks C. Getty
 Natasha Ginzburg and Ryan Sidebottom
 Laurie Goldsmith-Heitner and
 Saul Heitner
 Nancy Golomb
 David Guadagnino and Mary
 Beauchamp
 Lorraine J. Gudas
 Erin Guild and Andy Schaefer
 Charles M. Guthridge
 Bryan Hall
 James Hamlin
 Allen Handelman
 Mary and Robert Hanno
 Ronald and Rebecca Harris-Warrick
 Mark and Karen Hartsuyker
 Bruce Hayes and Pat Keating
 Jim and Betta Hedlund
 Frank and Jeannie Henderson
 Paul and Julie Herman
 Homer Garden Club
 Dennis and Sharon Hopwood
 William and Betty House
 Paul Houston and Barbara Lynch
 Dean and Meg Huff
 Georg and Lucia Jander
 Adam Jones
 James and Kimberly Kaffenbarger
 Tim and Virginia Kasser
 Paul Keller
 Kip and Sally Keller
 Lauren Kenworthy and Eric Schaeffer
 Clark and Ann Marie Kinlin
 Connie Kintner
 Bruce and Jen Klein
 Nancy Kleinrock
 Gary Kochersberger
 Judy Krieger
 John A. and Barbara J. Krout
 Harold and Christine Kurland
 Patricia and Jeff Lallas
 Daniel Lane and Emily Sullivan
 Douglass Lee
 Norma Leone
 Lois Levitan and Martha Armstrong
 Kathy J. Lindsley
 Frances Littin and Chuck Tauck
 David A. and Jane Loftus
 Jim Long and Nancy Reid
 Susanne T. Lorbeer
 David Lubin
 Sharon E. Mace
 John and Peggy Manring
 Albert Marques
 Timothy Martinson and Joanna Lynch
 Janet McCue
 Andrew McDonald and
 Cynthia Mathys
 Mary Ellen McDonald
 Kathleen McDonough
 Bruce and Eleanor McLear
 Bob Meek and Katheleen Reidy
 Michael Mercier
 Lana G. Merkel
 Barbara Miller Fox
 Todd Miner and
 Mary Elizabeth Iandoli
 Sarah and Ralph Miozzi
 Virginia Mistry

Donald M. and Roxann Muller
 Rachel Neugarten
 Jason and Kristina Nickerson
 Mary Beth Norton
 Dan and Jo-Ann O'Brien
 Annette Otis and Dan Gastin
 Dennis and Justine Page
 Joel and Debra Pasternack
 Edward Pearsall
 David Piacquad and Nina Elo-Piacquad
 Alice Ploss
 Ane Powers
 Protestant Cooperative Ministry
 at Cornell
 Beverly Anne Reed
 John and Judith Reppy
 Thomas and Betty Richards
 Vernon Rippeon
 Thomas and Sally Rodenhouse
 Laura Rodormer
 Amy Roxin
 Rebecca Ruggles
 Sue and Steve Ruoff
 Mike Russell
 Stevan and Mary Sayre
 Tom Schnorr and Ed Donnelly
 Sam and Carol Shama
 Linda M. Simkin and James Frisch
 Richard D. and Joanne Smith
 Sandra Smith
 Richard and Judy Sphon
 Barbara and Vincent Starr
 Wendy Stevenson
 Stewart Revocable Trust
 Tracy Stokol and John Parker
 David and Patricia Stone
 Kent and Heather Struck
 John and Natasha Suter
 Jennifer Sutherland
 John and Margie Sutton
 Steve and Cheryl Swartout
 David and Martha Swift
 Thomas and Sheryl Szlosek
 Helen Tai
 Genevieve Thompson
 Thorley Memorial Fund
 James and Deborah Tiff
 Samuel and Mimi Tilton
 Mark Tolbert and Hannah Coney
 Jeff Tonole
 Paul and Mary Torrisi
 Al and Karen Tricomi
 Robert Vanderlan and Audrey DeSilva
 Kathryn R. Vivian
 Demetra Vounas
 Charles and Jane Walcott
 Rudolph and Margaret Warren
 Christopher and Beverly Way
 Carl L. and Kristy A. Weber
 Leah Weinberg and Paul Barron
 Irene Weiser
 Nancy Wells
 Walter S. Westfall
 David and Heather Wheat
 Kathryn Wheat and Fred Schulte
 Nick Whitmer
 John and Linda Wickwire
 P.J. and Karen Winkelman
 Robert Woodhouse

Robert Wylie, D.D.S.
 Michael and Vanessa Yates
 Abbey Yatsko
 Lori Yelensky
 Martha Zettel and William O'Neill

\$250-499

Anonymous (11)
 Judith Abrams
 Marc Album
 Jon Allen
 Richard P. and Diane J. Amundson
 Britta Anderson
 Chip and Wendy Aquadro
 William and Patricia Ayling
 Charles and Kathy Babcock
 Gloria Baciewicz
 Kevin Bain and Margie O'Jea
 Jane Bain
 Don Barber and Rita Rosenberg-Barber
 Frederick and Marlene Barken
 Bruce and Rebecca Barney
 Ernie and Carol Bayles
 Stephen and Beth Beal
 Rodney Bent
 Beth Bentley and Edward Dougherty
 Deborah Blazey-Martin and
 Ross Martin
 Clarence Blewett
 Thomas and Marilyn Blythe
 Lenore Boris
 David and Amy Bowen
 Dennis and Mary Anne Brady
 Mike Braell
 Robert and Marcia Brancato
 Cynthia Bray and John Golay
 Timothy Brennan
 Paul and Maggie Bringewatt
 Robin Briscoe
 Linda and Raymond Brisson
 Joel and Susan Brock
 Jane H. Bronson
 Louise Buck
 Susannah Buhrman-Deever
 David J. and Margaret M. Burns
 Kathleen Button
 William and Ruth Cahn
 Susan Carpenter
 Scott and Mary Case
 Debra Castillo
 David and Linda Caughey
 Tom and Lisa Cavataio
 Dana Chadwick and Phil Brodrick
 Terence Chrzan and Susan Brown
 Paul Coen and Susan McCouch
 Melissa Cohen
 Maureen Coleman and Jacob Waldbauer
 Alan and Candace Collmer
 Stephen and Deborah Conroy
 David and Olivia Cornell
 Donald Court
 Lawrence and Kate Creatura
 Hank and Betsy Dalrymple
 Cami and Mark Dalton
 Dick and Claire Damaske
 Steve Daniel and Joan Zeller
 Jeffrey and Cate Davis
 Richard S. Dennison
 Chris and Mike Deschamps

Joseph Dlugolenski	David L. Kreinick	David Reynolds
David Dowler	Elizabeth Kreitinger and	Steven W. Rockey
Raymond Dreher and Elaine Tunaitis	Wade Simmons	Kelley and Michael J. Romano, D.D.S.
Earthshare of New York	William and Jane Kufta	David G. Rossiter
Linda Eberly	Raymond and Donna Kurlak	Ed and Louise E. Rossmann
Elizabeth S. Ehrlich	Dan and Grace Labeille	Ronald and Suzanne Rybak
Andrew J. and Colleen Epstein	Laurie LaChiusa	David and Lesli Sagan
Jacob Evelyn	Peter and Betsy Landre	Carl and O.J. Sahler
Tom Fairhurst	Dale Larnder	Eileen Salerno
Camila Faraday	Donald and Deborah Lauper	Laurent and Cathy Saloff-Coste
Achilles and Candy Filios	Neesa and Steven Levine	Eugene and Janet Sarbou
John Finnegan	Enid and Peter Littman	Tony and Kelly Scalzo
Thomas and Elizabeth Fisher-York	Amy Litwiler	Helene Schember and Terry Herter
Duncan and Jane Frame	Douglas and Kathleen Long	Heather Scherb
Jacqueline Frank	Brita Lorentzen	Kenneth Schmitt and Dorothy Rizzo
Marc and Kate Frazer-Devokaitis	Sue and Jeff Losey	William Schultz and Elaine Cosseboom
Hugh N. French	Matthew Lynaugh and Gloria Lee	Tom and Martha Schwartz
Roger and Carolyn Friedlander	Lee and Bruce Macbeth	Leslie and Bonnie Schweizer
D. Mark and Judy Fultz	Robert and Elizabeth Madden	Christopher and Amy Lynn Scibelli
Gerald and Annette Gacioch	Laura and Douglas Mann	Craig and Mary Ellen Scott
Gretchen Gaida Michaels and	Patchen Markell	Douglas and Darcy Sedgwick
Bruce Bierbaum	Edward and Patricia Martin	Richard Sensenbach
Robert and Louise Ganley	Marvin and Annette Lee	Catherine Shane
Amanda Garris and Gavin Sacks	Foundation Inc.	Alice and Don Shardlow
Bonnie and John Geraghty	Marc Mason and Lisa Bartlett	William R. and Gail N. Shaw
Ronnie Gerard	Samuel and Sarah Mason	Bonnie Shelley and Terry Garahan
Mitchell and Anne Glass	Rick and Kate Massie	Christopher and Theresa Shortz
John and Melanie Gorman	Marilou Masters	Sally Sievers and Anil Nerode
Robert Gosse	Joseph F. McCaffrey and Jackie Bays	Nick and Cyndi Signorelli
Wayne S. Gottlieb and Susan Suarez	William McCleary and Maxine Long	Nico Silins and Jessica Ratcliff
Christopher Grace and	Peter and Scobie McClelland	Matthew and Whitney Simone
Kathleen Roberts	Saoirse McClory and Larry Hirschberge	Carol U. Sisler
John and Kim Haines-Eitzen	Nancy L. McConnell and	Hank and Jeannie M. Slauson
Arthur Halbritter	C. William Champlin	John W. Smith and Polley McClure
Dana Hall	Barbara McCutcheon and	Richard and Patricia Smith
Douglas and Pamela Hamlin	Narayana Kocherlakota	Larry and Beverly Snively
Mary Hamlin	Roger and Darlys McDonough	Philip Snyder and Patricia Paine
Margaret M. Hammond and	Drury MacKenzie McGregor and	David Spaulding
John Oakley	John McGregor	St. John's Episcopal Church
Patricia and Roger Hansen	James and Leslie McGuidwin	Erika Stapleton
Anthony Hanson	Bob McGuire and Judy Keil	Mary Stazie and Paul Reinhardt
David and Pauline Harding	Joe McMahon and Gail Steinhart	Walter and Sharon Stevens
Ben Harrison	Keith Mercovich	Richard Stiggins and Kathy Murphy
Richard and Linda Hawks, Jr.	Robert and Linda Meredith	Bob and Gayle Stiles
Nancy Hawver	Kathanne Mitchell	David and Elizabeth Stilwell
Louise Hayes	Dr. and Mrs. Walter Morgan	William and Carol Stokes-Cawley
Louis and Sue Heavenrich	Kathleen A. and Peter W. Mye	Mark and Ellen Sussman
Carman and Sandra Brink Hill Fund of	Elizabeth Newbold and Cory Steckler	Irene Szabo
Community Foundation of	Renée Newton and Kells Elmquist	Alan and Joanne Tausz
Tompkins County	Ruth Nix	Regi Teasley and Judith Saul
Benjamin Hoffman	John and Julia Norris	Michelle Thevenin
James Holman and Dorothy Buerk	Eugene and Ann Northrop, Jr.	Elizabeth and Robert Thomas
David Holmberg and Kathryn March	Mark and Elizabeth O'Malley	Andrea Thompson
Alan Hopenwasser	Charles O'Neil and Carolyn Legg	John and Pamela Thompson
Estate of Margot Hughes	Lisa and Tim Onoff	Nancy E. Tiedemann
Laura E. Hunt and Gary Hill	Ron and Nancy Ostman	Margaret Tourville
Nita Irby and Tom Divers	Ken and Graham Ottoson	James and Salli Tuozzolo
Christopher and Melissa Jacobs	Thomas Owens and Deborah Streeter	Jaime Tuozzolo
David Jacobs	Allen and Jane Pardee	David and Lucia Tyler
Robert and Catherine Jamieson	Thomas and Brenda Parkes	Curtis and Amanda Ufford
Ashley and Anthony Jarc	Taylor Peck	Marjolein van der Meulen
Chris Johnson	Daniel and Diane Pluff	Richard S. Vanbrunt
Steven Jones	Andrew B. and Susanne M. Quagliata	Thomas and Cheryl Vis
Bruce and Anne Kennedy	Richard and Kelli Quehl	Kathy R. Vogel
John Kenney and Mary Daniszewski	Joan Ramage-Macdonald and	James and Deanna Walker
Ted Kinder	Leo Macdonald	Charlie and Susan Wallace
Jeffrey Kirshner and Lorraine Rapp	Kathy Rayburn	David Weber and Carol Wittlieb Weber
Trudie Kirshner	Patrick and Anne Reilly	Tom and Maureen Welch
Stephen Krebs	David Reinhardt	Carol Weldon

Geoffrey and Virginia Wickwire
Helen P. Wiley and Marian Payson
Timothy and Betsy Williams
Charles and Nancy Williams
Tom and Colleen Wilmot
Herbert Winkelmann
Mark and Alicia Wittink
Rich and Patty Yarmel
Joseph and Valerie Yingling
Joanne Young
Melissa and Thomas Zell
Ryan and Katrina Zepp

CORPORATE AND BUSINESS DONORS:

Acre Equity Advisors
Armbruster Capital Management, Inc.
Aurora Brewing Company
Carrier
Cayuga Lake National Bank
Chemung Canal Trust Company
Cornell University
Corning Incorporated Foundation
Fieldtex Products, Inc
Finger Lakes Fire & Casualty Co.
Finger Lakes Visitors Connection
Genworth Foundation
Google
Happy Earth Tea
Ironwood Adventure Works LLC
John G. Ullman & Associates, Inc.
Keuka Lake Cycling Events LLC
Marks Engineering, PC
Microsoft
Miller Mayer, LLP
Outside Chronicles
Perry's Ice Cream
Point of the Bluff Vineyards
Portland General Electric
Principal Financial Group Foundation
Red Newt Racing LLC
Richard M. Morse
Conservation Club, LLC
Sheats & Bailey, PLLC
SiriusXM
Skaneateles Brewery, LLC
Spreadshirt, Inc
Stanley Law Offices
T. Rowe Price
T.G. Miller P.C.
Velmex, Inc.
Wagner Vineyards
Yunis Realty, Inc.

PRO BONO ATTORNEYS:

Jim Miller and the law firm
Miller Mayer, LLP
Andrew Simkin

IN-KIND DONORS:

Bet the Farm Winery
Black Diamond Farm and Cider
Heron Hill Vineyards, Inc.
Liquid State Brewing Company
Pioneer Printing
Sheldrake Point Winery
Six Mile Creek Vineyard
The Treman Center
Wendy Harris Fine Art

This report acknowledges those who generously donated land, conservation easements, and in-kind gifts, or gave \$250 or more from January 1 to June 30, 2025.

LAND, CONSERVATION EASEMENT, AND REAL ESTATE DONORS:

Grace Bates
The Estate of David Connolly
Don and Anna Dewitt

\$250,000+

Anonymous (1)
New York State Department of Environmental Conservation

\$100,000+

Anonymous (2)
Maisie Houghton

\$20,000-99,999

Anonymous (1)
Lew and Dawn Allyn
The Firefly Fund
Dan Fisher and Lori Ruhlman
Dan Karig
Laurel Gibbs Memorial Fund
Justine Lyng
The Makowski Trust
Park Foundation Inc.
Douglas B. Sutherland and Nancy Kramer
Tompkins County
Town of Skaneateles
Fred and Susan Van Sickle

\$10,000-19,999

Anonymous (1)
Grace Bates
Larry Blume and Maralyn Edid
Ed and Robin Dubovi
Ann Dwyer
Edward and Verna Gerbic Family Foundation
Doug and Kip Hargrave
John and Robin Moss Hinchcliff
John and Candace Marsellus
David and Patricia Maule
Lesley Moffett-Krause
Robert F. Schumann Foundation

\$5000-9999

Martha Armstrong and Lois Levitan
Mark R. and Catherine A. Foerster
Elizabeth P. Gordon
Donna Himelfarb
Laurel Moranz and John H. MacAllister
Gerald Morsello and Elaine Rees
Meg and Glenn Reed
Nancy Sands

Charles P. and Nancy C. Scholes
Charles and Jane Walcott
Bill and Jennifer Warning

\$1000-4999

Anonymous (4)
Susan C. Aiello and Larry Aiello, Jr.
Robert and Barbara Amsler
Cort Anastasio
Lynn Andersen
The Arthur Vining Davis Foundations
Carl F. Battaglia
Irv Beimler and Georgia Stormes
Rodney Bent
Dave and Joanna Bock
Jeff and Sandy Bricker
James and Terry Byrnes
Jim Chamberlain and Karen Dyson
J.A. Chisholm
Melissa Cohen
Lisa Colacurcio
Douglas and Norah Cramer
James DeKay
Bill Destler and Rebecca Johnson
Blake and Tanya Dillon
Judy Dobles and Barry Akin
Clover M. Drinkwater
Richard Dudley and Carol Colfer
Carolyn Eberhard
William Eggers and Deborah McLean
Maria Eisner
Anna and Theodore Endreny
Herb and Connie Engman
David Foster and Kathleen Jacques
Phillip Gioia and Catherine Willsey
Carla Golden
Robert G. Good
Michael S. and Rita Gow
Bradley and Mary Grainger
Randy and Meg Green
Lorraine J. Gudas
Barbara R. Hamlin
Tim Hamlin
Heather Hillman and Jack Whalen
Michael and Kathleen Hoar
Dennis and Sharon Hopwood
Rob and Claire Howard
Martha Hueter
Mark Jauquet and Mickie Sanders-Jauquet
Kurt Jirka and Barbara A. Knuth
Rosalind Kenworthy
Michael Kotlikoff and Carolyn McDaniel
Judy Krieger
Gregg and Sue Layer
Paul and Kathleen Leone
Gene Likens
Jennifer and Daniel Loucks
Hadley Lundback
Robert and Emily Marchenese
James McGarry
John P. and Elizabeth Y. McKinnell
Christopher T. Moore
John and Janis Moses
Mary Beth Norton
Michael O'Hanlon
Frederik and Sheila Osborne
Barbara Page

Robert E. Hansen Family Foundation
 Rachel and Vanya Rohwer
 Sue and Steve Ruoff
 Greg and Betsy Russell
 Tony and Kelly Scalzo
 Mary and Charlie Scott
 The Estate of Jean Shook
 John and Bonnie Sirianni
 Gregory and Amanda Slisz
 Laura Stenzler and Ton Schat
 Alan Stone
 Peter and Lisa Sykes
 Jean M. and Roger Thompson
 Liz Thorndike
 Joyce Toher
 Paul and Mary Torrisi
 Charles and Nancy Trautmann
 Mary Jane Uttech
 George D. Van Arsdale and
 Elizabeth Osta
 Judy Varney
 John and Jean Vincent
 The Judy and Erik von Bucher
 Advised Fund at the Rochester Area
 Community Foundation
 Cory Ward
 Patty Weisse and George Thomas
 Penelope Wickham and Thomas Kather
 Donald D. Wilson
 P.J. and Karen Winkelman
 Mark and Karen Wood
 Thomas Zollo and Sharon Renchof

\$500-999

Anonymous (1)
 Diane C. and Jerry Albrecht
 Paul Anderson
 Neil and Maggie Atkins
 Diana Ayers
 Tom Babcock
 Max Brashear
 Timothy Brennan
 Marc Brown and Susan Taylor-Brown
 James Burger
 Tom Butler and Stephanie Behler
 Jay W. and Julie Carter
 Kenneth Crawford
 Betsy and Dick Darlington
 David DiRaddo
 Alan Dolmatch
 Michele V. Dryer
 Eggers Family Charitable Fund
 Barbara Egtvedt
 Sally and Tim Eller
 Mark Fairchild and Lisa Reniff
 Sue J. Forsyth
 Ronnie Gerard
 Karen and David M. Gorgonzola
 Gaylinn Greenwood
 Allen Grieco and Anne Waterman
 Bryan Hall
 Catherine Harris
 Jim and Betta Hedlund
 William and Betty House
 Suzanne Hunt and Matt Kelly
 Ursula Jander
 Larry R. Jensen
 Adam Jones
 Donna and Andrew Kaiser

Gary Kochersberger
 John A. and Barbara J. Krout
 Carolyn Legg and Charles O'Neil
 Anne and Ray Leinen
 Judy W. Linehan
 Susanne T. Lorbeer
 Kenny and Kelly Makosch
 Albert Marques
 Rick Marx and Alan Grethel
 Andrew McDonald and
 Cynthia Mathys
 Kathleen McDonough
 Sarah and Ralph Miozzi
 Alexandra Mitchell
 John and Julia Norris
 Annette Otis and Dan Gastin
 Dennis and Justine Page
 Tamara L. Renner
 Thomas and Amy Scalici
 Kris Scholl and Brooke Oropallo
 Joan Schumaker
 Mark Shortino
 David Spaulding
 Tracy Stokol and John Parker
 Paul Strebel
 Ann Sullivan and Nick Salvatore
 Charles and Kristin Swain
 Steve and Cheryl Swartout
 David and Martha Swift
 William Thompson
 James and Deborah Tiffit
 Jeff Tonole
 Cheryl Vis
 James and Margaret Webster
 Rick and Donna Weinstein
 Donald P. Wertman
 Paula White
 Nick Whitmer
 Christa Whitney-Miller and
 Matthew Miller
 Herbert Winkelmann
 Michael and Vanessa Yates
 Trudie Young

\$250-499

Bill Banaszewski and Michele Howland
 Marcia Barry
 Gary and Vanessa Belcher
 Sandra Bierbrauer
 Wendy L. Blewett
 Paul and Maggie Bringewatt
 Susan Buck-Morss
 Jill and Brian Cadogan
 Aaron and Emilie Calodney
 Scott and Mary Case
 Dana Chadwick and Phil Brodrick
 Ed and Paula Conan
 Marguerite Coniff-Kane
 Bobby and Susan Creed
 Heather Cringan and
 Marshall Thomas IV
 Marlene Dattilo
 Michael and Joyce DeVito
 Richard Dubois
 Linda Eberly
 James Edwards and Elise A. Skalwold
 Ronald Fielding
 Paul and Carrie Floreck
 Albert F. Freihofer

Susan Fritts and Peter Penniman
 Robert and Tracey Fuller
 George M. Ewing Canandaigua Forum
 Cole Gilbert
 Nancy Golomb
 Wayne S. Gottlieb and Susan Suarez
 Tom Harradine and Judy Patchen
 Louis and Sue Heavenrich
 Daniel and Sarah Hincks
 George and Carolyn Hiza
 Alan Hopenwasser
 Carolyn Jacobs
 Lawrence Jones and Vera Versteeg
 Nick and Kathryn Jospe
 Petra Keller
 Ted Kinder
 Ronald and Cynthia Kowalski
 Raymond and Donna Kurlak
 Doug and Gigi Lamb
 Benjamin Lavery and Maura Swan
 Donald Lein
 David A. and Jane Loftus
 Harriet London
 Jim Long and Nancy Reid
 John and Susanne Lovisolo
 Daniel and Kirsten Mahar
 Lorraine Manelis
 Charlene Marx
 Marc Mason and Lisa Bartlett
 Barbara McCutcheon and Narayana
 Kocherlakota
 Mary Ellen McDonald
 Keith Mercovich
 James Miller
 William G. Miller and Shirley A. Ruch
 Kathleen Moore
 Dr. and Mrs. Walter Morgan
 Elizabeth Newbold and Cory Steckler
 Renée Newton and Kells Elmquist
 Jason and Kristina Nickerson
 Eileen O'Connor and Keith McCafferty
 Ash Otsuka
 Kim and Jason Persse
 Penelope Peterson
 Scott and Melissa Portuondo
 Carrie Radivoyevitch
 Laurel S. Raines and William Vitek
 Kathy Rayburn
 Kimberly Riccio
 David Rice and Suzanne Gervais
 Liz Ristow and Josh Massicot
 John and Dianne Rizzo
 Greg Robitaille
 Amy Rolleri and Ronald Butchart
 Lynne Royer and Bruce Saldinger
 Joan Ryan
 Eugene and Janet Sarbou
 Stevan and Mary Sayre
 Kenneth Schmitt and Dorothy Rizzo
 Tom and Martha Schwartz
 Patrick Sewell
 Bonnie Shelley and Terry Garahan
 Nico Silins and Jessica Ratcliff
 Evan Singer
 Nick Smarto and Teagan Papke
 Mary Stazie and Paul Reinhardt
 James Stewart
 Thacher Family Cousins
 United Way of Tompkins County



Maurice and Janet Vaughan
Kathy R. Vogel
Jacob and Grace Vorreuter
James and Deanna Walker
Robert Warfield and Allison Smith
David Weber and Carol Wittlieb Weber
George D. Westervelt
Michael and Janet Wilson
Sarah Wolpow and Stephan Bamberger
Abbey Yatsko
Melissa and Thomas Zell
Alison Zepp
Martha Zettel and William O'Neill

CORPORATE AND BUSINESS DONORS:

Armbruster Capital Management, Inc.
Auto Wash
Carrier
Constellation Brands
Cornell University
Corning Incorporated Foundation
Genworth Foundation
GitHub
Google
Happy Earth Tea
Main Window Cleaning
Marks Engineering, PC
Red Newt Racing LLC
S&P
Salesforce
Schottland Chosen Spot LLC
T. Rowe Price

IN-KIND DONORS:

Pioneer Printing

Every effort has been made to ensure the accuracy and completeness of this list. If we have made an error, please accept our apologies.



SUPPORT OUR WORK

HELP THE FINGER LAKES LAND TRUST SAVE MORE LAND AND WATER!

VISIT [FLLT.ORG/SUPPORTOURWORK](https://fllt.org/supportourwork) TO LEARN ABOUT THE VARIOUS WAYS OF GIVING INCLUDING GIFTS OF CASH OR STOCKS, DONOR ADVISED FUNDS, PLANNED GIFTS, AND MORE.

FOR MORE INFORMATION, CONTACT DIRECTOR OF DEVELOPMENT

CHERISE TOLBERT AT [CHERISETOLBERT@FLLT.ORG](mailto:cherisetolbert@fllt.org) OR (607) 275-9487.



FINGER LAKES LAND TRUST STAFF

Andrew Zepp
President

Meghann Andrews-Whitaker
Chief Operating Officer

Patrick Arancio
Operations Assistant

Karinna Browning
Development Specialist

Molly Corley
Executive Coordinator

Blake Enos
Land Steward

Jason Gorman
Nature Preserve Manager

Max Heitner
Director of Conservation

Edie Jodz
Director of Communications

Gretchen Leupelt
Land Conservation Systems Specialist

Eric Mastroberti
Senior Land Steward

Lindsay McMillan
Hemlock to High Tor Project Director

Hailey Nase
Conservation Easement Stewardship Manager

Amy Olney
Conservation Projects Manager

Chris Olney
Director of Stewardship

Danaka Olsen
Development Associate

Morgan Priore
Senior Development Associate

Chris Ray
GIS Program Manager

Kate Riley
Land Conservation Specialist

Margaret Royall
Conservation Easement Steward

Cherise Tolbert
Director of Development

Finger Lakes Land Trust
202 E. Court St.
Ithaca, NY 14850

EIN: 22-2983688

FLLT.ORG

Finger Lakes Land Trust
202 E. Court St.
Ithaca, NY 14850

Return Service Requested



TO CONSERVE FOREVER THE LANDS AND WATERS
OF THE FINGER LAKES REGION, ENSURING
SCENIC VISTAS, LOCAL FOODS, CLEAN WATER,
AND WILD PLACES FOR EVERYONE.

