



# The Land Steward

NEWSLETTER OF THE FINGER LAKES LAND TRUST

working to protect the natural integrity of the Finger Lakes region

Vol. 29, No. 2 • Spring 2017

## New Conservation Easement Protects Ithaca Horse Farm

*The origins of Sheffield Farm date back to 1969, when Jan and Susan Suwinski purchased a 62-acre property on Ithaca's West Hill to pursue their passion for horses. Jan is an avid polo player, and was a member of the 1963 Cornell polo team that won a national championship, while Susan is a competitive trail rider who now also enjoys carriage driving. continued on page 3*

*The Suwinski horse farm extends from state route 79 in the center of photo, to the red barns on the left to the fields on the far right.*

BILL HECHT

## Land Trust Expands VanRiper Conservation Area on Cayuga Lake

**B**ordering Cayuga Lake in the town of Romulus, the VanRiper Conservation Area and Whitlock Nature Preserve together provide public access to a rare and beautiful mix of shoreline and forest ecosystems. The Land Trust just purchased 15 acres to expand this natural area.

On the slope above Cayuga Lake, on the west side of state Route 89, this property has features that are typical of the Finger Lakes: a deep gorge, flanked by diverse forest. This new addition  
*continued on page 2*

DICK RUSWICK



*It's been another year of erratic weather, and the impacts of climate change are becoming increasingly clear across the globe.*

Concerns in our region range from last year's drought to wild winter temperature swings that are damaging our fruit crops. Increasingly, intense rain storms are also damaging roads, homes and bridges while feeding algae growth in our lakes.

The Land Trust recognizes the myriad challenges associated with climate change, and we're already factoring these issues into our work. As we survey the 12 counties that comprise our region, we're assessing how best to accommodate renewable energy facilities, such as solar farms, in ways that don't have harmful impacts on sensitive wildlife habitats and prime farmland.

We're also working on the protection of landscape corridors that will allow plants and animals to migrate over time in response to changing conditions. By creating such networks of conserved land, we can increase the resilience of our natural habitats, while maintaining higher levels of diversity.

In the face of more intense rainstorms and associated flooding, we're increasing our focus on the protection of sensitive stream corridors and floodplains. During the past few years, communities such as Penn Yan and Owego have suffered from significant floods. To minimize the impact of future floods, we're working with partners to keep development out of floodplains and, wherever possible, to restore wetlands that can hold water and act as buffers during flood events.

As we work on these issues, we're painfully aware of how much we still don't know. So we'll be pursuing our work, informed by the best knowledge available, but we also recognize that we'll have to adapt our strategies as future conditions change and as our understanding and knowledge evolve.



Andrew Zepp, Executive Director, Finger Lakes Land Trust

## Land Trust Expands VanRiper Conservation Area on Cayuga Lake *continued from cover*

extends protection along the gorge from the current VanRiper Conservation Area. An unnamed stream flows seasonally through the gorge, adding to the property's biodiversity and habitat value. The forest surrounding the gorge is like much of the rest of VanRiper's second growth forest, with a mix of tree and shrub species, including mature hemlock, beech, maple and oak.

In an area so close to the lake, with few undeveloped tracts of land remaining, it is exciting to protect this property, particularly because it adds to an existing preserve. The new project expands the contiguous network of conserved lands and provides additional opportunities for public access and recreation.

"It's a beautiful piece of property, one that has value for wildlife and people," said Zack Odell, director of land protection at the Land Trust. "Protection of this land will also help ensure Cayuga Lake's water quality."

Funding for the purchase came from the Land Trust's recent Shoreline to Summit capital campaign. Like all 32 of the Land Trust's preserves, activities at the VanRiper and Whitlock Preserves are governed by a management plan that details the preserve's conservation value and lays out conservation goals and priorities. Land Trust management plans are updated periodically by a committee of staff and volunteers to ensure long-term stewardship and protection of the values that make these preserves and conservation areas special in the first place.

Consistent with the Land Trust's public use policy at both VanRiper and Whitlock, the new addition will be accessible to the public for recreational uses including hiking and bird watching. With the lake so close, there is ample opportunity to see a variety of shore and water birds, including Spotted Sandpipers, Buffleheads, Common Loons, or even the occasional Bald Eagle or Osprey.

Looking at the visitors' log at the VanRiper trailhead, you will find a mix of locals and out-of-town guests. The property is in the heart of Finger Lakes wine country, just half a mile from Toro Run Winery—one of the many stops on the Cayuga Lake Wine Trail. State Route 89 is also part of the Cayuga Lake Scenic Byway, recognized by New York State for its scenic, recreational, and natural heritage qualities.

The addition of the new property to the existing VanRiper Conservation Area helps ensure that these features will continue to be protected. The forest habitat that is so important to this recent acquisition helps control erosion and sedimentation, helping to protect the water quality of Cayuga Lake, the wildlife habitat, and the beauty of the area that inspires locals and tourists to get outdoors and explore.

—Alli Sribarra

*The Land Trust gratefully acknowledges Attorney David Loftus of Skaneateles for providing pro bono legal services in support of this project.*



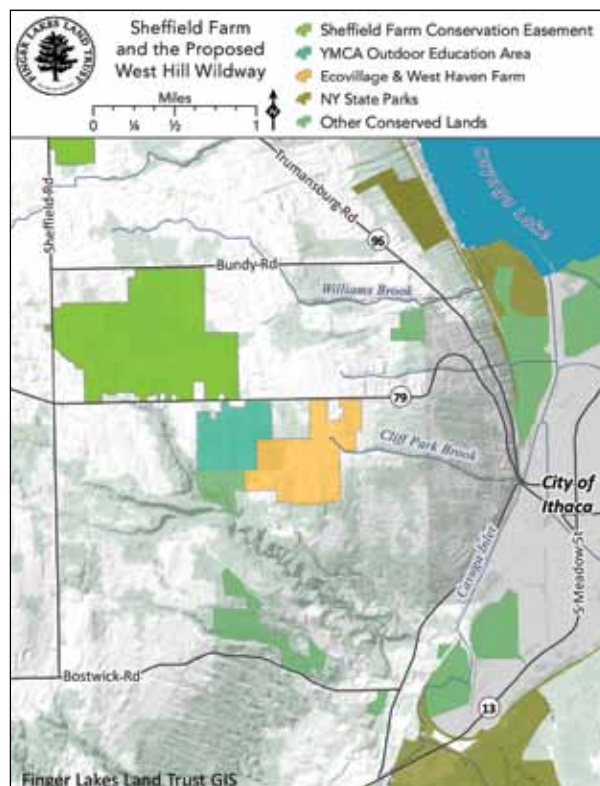
# New Conservation Easement Protects Ithaca Horse Farm *continued from cover*

Over the next 40 years, the Suwinskis expanded their farm by gradually purchasing neighboring properties whenever they became available for sale. Sheffield Farm now covers more than 470 acres and is one of the largest remaining privately owned parcels in Ithaca.

Recently, the couple donated a conservation easement on Sheffield Farm to the Land Trust. “We’ve been involved with horses our whole lives,” Jan said. “This farm has been a labor of love for us, and with the increasing loss of open land in Ithaca, we wanted to be sure our farm retained its natural state.”

The Suwinskis are lifelong conservationists and long-time supporters of the Land Trust. Jan has been on the Land Trust board for six years and currently serves as Treasurer. Susan is on the Board of Trustees of the Central & Western New York chapter of the Nature Conservancy. “Given our familiarity with land conservation and our involvement with the Land Trust, we knew at some point we would pursue a conservation easement for our farm,” Jan said.

With the exception of a 40-acre parcel located a half-mile away (currently in use as a hay field), Sheffield Farm is one contiguous property nestled between State Route 79, Sheffield Road, and Bundy Road. The property consists of fields and forest, with varied levels of woodland



growth reflecting the transition from farmland back to woods. There are also several sizable ponds on the property.

The farm has some unique equestrian-oriented features. In addition to the stables and pastureland for the horses, there is a polo field in the southeast corner of the property that gets ample use by the Central New York Polo Club during the summer months. The Suwinskis also developed and maintain a network of trails around the property

for both horse riding and carriage driving. They are members of the Cherry Valley Carriage Association and host an annual Fun Day and Pleasure Drive on the farm.

“We feel lucky to have an organization like the Land Trust in our area,” said Jan. “It’s gratifying to work with a dedicated group of people as they go about fulfilling their mission of land protection, and for us to be a part of that while protecting our farm is wonderful.”

The Land Trust intends to build upon this generous donation from the Suwinskis by working with the Town of Ithaca and other partners to create the West Hill Wildway—a greenbelt that will ultimately extend from Sheffield Farm to Robert H. Treman State Park. The greenbelt will ultimately link these areas to town conservation land, a YMCA outdoor education center, and undeveloped portions of EcoVillage Ithaca, an intentional community.

—Jeff Tonole

*The Land Trust gratefully acknowledges Carolyn Fame and Attorney Donald Snyder of the law firm Harter Secrest & Emery, LLP in Rochester for providing pro bono legal services in support of this project. The Land Trust also acknowledges Attorney Don Crittenden of the law firm Harris Beach, PLLC in Ithaca for contributing a portion of his services in support of this project.*

## West Hill Wildway Effort Kicks Off With Easement Donation

*The protection of Sheffield Farm not only ensures the future of one of the largest privately owned properties remaining in Ithaca—it also launches a new effort to create a greenbelt along the west side of the town of Ithaca.*

This effort, known as the “West Hill Wildway,” will eventually connect a four mile stretch of farm and forest land extending from Robert H. Treman State Park in the south to Bundy Road in the north. In addition to the Sheffield Farm easement, the wildway already features a Land Trust easement on a portion of the EcoVillage community, the YMCA’s outdoor environmental education center, and conservation lands owned by the Town of Ithaca and by Cornell Botanic Gardens.

Additional parcels within the wildway are privately owned and the Land Trust is reaching out to these owners

to explore options for conserving key portions of their properties. While the initial focus will be on conserving land, the Land Trust is also assessing the feasibility of creating a hiking trail that would traverse the wildway and connect to downtown Ithaca.

“This is truly a rare opportunity to create a network of conservation lands that could extend outward from the center of one of our cities,” said Land Trust Executive Director Andy Zepp.



# 29 Acres and a Piece of Skaneateles Lake History Conserved Forever

The Land Trust recently protected 29 acres on the eastern hillside of Skaneateles Lake, in the town of Spafford, with a conservation easement. The property has been in Art Woldt's family since 1920 when it was purchased by his grandfather, a Czechoslovakian immigrant, who farmed the land into his 80s.

When Art first came upstate from Staten Island to visit his grandparents' farm in the early 1930s, he was barely three years old. The farmhouse where they lived had no plumbing, no electricity, and only a dirt road leading to the house. From the first day of school break to the last, Art spent every summer at the farm swimming, picking berries, building lean-tos, and helping his grandfather with various chores. He loved the quiet and peaceful open space, so different from the bustling streets of New York City.

The family was self-sufficient, relying on food grown or raised on the farm, and Art fondly remembers his grandmother's apple pies, made from the Northern Spy variety grown in their orchard. In addition to apples, the farm produced wheat, corn, potatoes, and cabbage, and included a herd of dairy cows, as well as pigs and chickens.

This idyllic pastoral upbringing gave Art a close connection with the land that endures to this day. The decision to protect his land began with a desire to protect his family legacy and preserve it for his children and grandchildren. "My vision is that this land will always remain this way," he said. "My children can come up here and fly kites, pick berries like I did, and enjoy nature—which pleases me."

Conservation of the property, which includes 1,640 feet of creek frontage, will help protect water quality within the Skaneateles Lake watershed and maintain the rural beauty of the area. The property sits in close proximity to the Land

Trust's High Vista and Hinchcliff Family preserves. Across the lake, the Woldt property is visible from the Land Trust's Bahar Nature Preserve and Carpenter Falls. These conservation areas are key components of the Land Trust's Skaneateles Highlands Protection Project, which aims to create a greenbelt around the south end of the lake.

The land has been passed down through the family, and now, at the age of 89, Art resides on the property in a house built by his parents, where he enjoys observing the various wildlife that pass through his property, including fox and coyote. Coincidentally, the donation of the conservation easement was completed on Art's 89th birthday.

As a retired employee of the New York State Department of Environmental Conservation, where he worked for 24 years, Art saw his department go from a small network of agencies managing hunting, fishing and camping in the 1960s to absorbing programs of the Department of Health such as the management of air and water pollution and solid waste.

"It's all connected," Art said. "You're not going to have good fishing if you don't have clean water. It made sense to bring this all together."

*The Land Trust gratefully acknowledges Attorney Tim Lynn of the law firm Centolella, Lynn, D'Elia & Temes, LLC in Syracuse for providing pro bono legal services in support of this project.*

**My vision is that this land will always remain this way. My children can come here and fly kites, pick berries like I did, and enjoy nature.**

Art today, age 89



## Our deepest gratitude for thoughtful gifts in memory of...

<b>Robert and Edith Agard</b> FROM <i>Kris and Jim West</i>	<b>Dick Dewitt</b> FROM <i>John Coughlin</i>	<b>Lee N. Miller</b> FROM <i>Sylvia Miller</i>	<b>Janice B. Ryan</b> FROM <i>Richard Ryan</i>
<b>Sam Argetsinger</b> FROM <i>Emma Schockner</i>	<b>Lewis H. Durland IV</b> FROM <i>Amy Durland and Robert Mains Chris Jolluck</i>	<b>Shelley Mulvaney</b> FROM <i>Myra Shulman and James Morin</i>	<b>Eleanor "Ellie" Scott</b> FROM <i>Walt Scott</i>
<b>Doug Bates</b> FROM <i>Grace Bates</i>	<b>Richard "Rick" Harrison</b> FROM <i>Chip and Wendy Aquadro</i>	<b>Al Muscari</b> FROM <i>John Coughlin</i>	<b>Daniel G. Sisler</b> FROM <i>Carol Sisler</i>
<b>Paul Beech</b> FROM <i>Douglas Beech</i>	<b>David Winkler and Amy McCune</b>	<b>George A. Nolan</b> FROM <i>Sean Carter</i>	<b>Ora and Laura Lee Smith</b> FROM <i>Sarah Jane Burton</i>
<b>Fred and Nancy Bent</b> FROM <i>Rodney Bent</i>	<b>Dr. Edward E. Hart</b> FROM <i>David Rossiter</i>	<b>Jocelyn Bull Notz</b> FROM <i>Dr. and Mrs. W. Eugene Notz</i>	<b>D. Michael Smith and Donald W. Smith</b> FROM <i>Charles and Julianne Hoffman</i>
<b>Bill and Pat Billings</b> FROM <i>Arthur Sherman</i>	<b>Carl Leopold</b> FROM <i>Andrew Hillman Cyrus Umrigar</i>	<b>Charles Pearman</b> FROM <i>David Benn</i>	<b>Abby Stone</b> FROM <i>Karen Shockey</i>
<b>Jane Brace</b> FROM <i>Mary Sennett</i>	<b>Norman and Edith Kelsey Lewis</b> FROM <i>Phyllis Purple</i>	<b>Sigrid Prentice</b> FROM <i>Jill Austin</i>	<b>Therese Tischler</b> FROM <i>Jody Stackman</i>
<b>Russell Vernon Conklin</b> FROM <i>Laure Conklin Kamp</i>	<b>Walter McAllester</b> FROM <i>Brad McAllester</i>	<b>George H. Prentiss</b> FROM <i>Bard and Gina Prentiss</i>	<b>Harold Van Pelt</b> FROM <i>Annette Otis</i>
<b>Albert and Sybil Craig</b> FROM <i>Jon and Lisa Mower Gandelot</i>		<b>Robert W. Purple</b> FROM <i>Leslie Lindler Chung and Sue Yang</i>	<b>Muriel Elwin Zepp</b> FROM <i>Janet Starr</i>



## Seeking Car or Truck Donation

The Land Trust is seeking the donation of a car or truck with low mileage to assist our stewardship staff—fuel-efficient, compact car with all-wheel drive preferred. As per IRS guidelines, contributions are tax deductible to the extent allowed by law. Please contact Director of Development and Communications, Kelly Makosch at (607) 275-9487.

## Our appreciation for gifts in honor of...

<b>Simone and big brother Adrien</b> FROM <i>Mitchell and Linda Lavine</i>	<b>Cian and Nira Chambliss</b> FROM <i>Allan Chambliss</i>	<b>Jacob and Phoebe Eisman</b> FROM <i>Shelly Schlueter</i>	<b>The Hemlock Trees</b> FROM <i>Mark Whitmore</i>	<b>Molly McLeod</b> FROM <i>Jeff Katris</i>	<b>The Scholl Family</b> FROM <i>Lynn Sichelstiel</i>
<b>Emily and Rocci Aguirre</b> FROM <i>Michael and Harriet Eisman Shelly Schlueter</i>	<b>Tom and Linda Clougherty</b> FROM <i>Kim Clougherty</i>	<b>Lang Elliott and the birds of the Cayuga Lake Basin</b> FROM <i>Diane Traina</i>	<b>Kenneth and Jeanne Hutton</b> FROM <i>Vic Piatt</i>	<b>Sarah Miller</b> FROM <i>Julie Miller</i>	<b>Hannah and Dina Shapiro</b> FROM <i>Deborah Starr</i>
<b>The Bennett Family</b> FROM <i>Sarah and Daniel Hincks</i>	<b>Betsy Darlington</b> FROM <i>Kate Beare Lois Darlington</i>	<b>Martha Ferger</b> FROM <i>Kathryn Ferger</i>	<b>Paul Salon and Barbara Jastran</b> FROM <i>Taylor Peck</i>	<b>Mr. and Mrs. Michael Olmstead</b> FROM <i>Mary Lee Beer</i>	<b>Wendy and John Sinton</b> FROM <i>Mr. and Mrs. Christopher Sinton</i>
<b>Adam and Sarah Brumberg</b> FROM <i>Joan and David Brumberg</i>	<b>Emily C. Dean</b> FROM <i>John Dean and Maureen Carroll</i>	<b>Martha Fischer</b> FROM <i>Matthew Fischer Kate Potteiger and Stephen Goggin Nancy Robinson Peter and Pam Robinson Roberta Fox Robinson</i>	<b>Diane Morton and Ken Kemphues</b> FROM <i>Ranjita Morton</i>	<b>The birthdays of Deb Roe and Rosanne Murphy</b> FROM <i>Annette Nadeau</i>	<b>Jan and Susan Suwinski</b> FROM <i>Judy Sobczak</i>
<b>Joan and David Brumberg</b> FROM <i>Amy Opperman Cash</i>	<b>Michael Eck</b> FROM <i>Richard and June Brickwedde</i>	<b>Polly Garrison</b> FROM <i>Finger Lakes Fire &amp; Casualty Co.</i>	<b>Maura Kinast</b> FROM <i>Carl Crumley</i>	<b>Bud and Ellie Rohrer</b> FROM <i>Henry and Sheila Rohrer</i>	<b>Guido and Nancy van der Ven</b> FROM <i>Edwin Hanlon</i>
<b>Patti and Jules Burgevin</b> FROM <i>Peter Burgevin and Margo Alexander</i>	<b>Gayle and Phil Edgerton</b> FROM <i>Bill and Valerie Yust</i>	<b>Mark and Alice Goldfarb</b> FROM <i>Jeremy Stamas</i>	<b>Peter Kresock</b> FROM <i>Linda Kresock</i>	<b>Lindsay Ruth</b> FROM <i>Linda Delacruz Doug and Ellen Henrie Leigh Jones Carol and Lloyd Kylis Phil and Kathy Miller Jennifer Morris and Jim Spates Rachel Ruth and Paul Gorgen Susan and Benjamin Ruth Sam and Carol Shama Kathryn and Daniel Slining Haynes Jeremy Weaver West Wind Consulting</i>	<b>Fred Van Sickle</b> FROM <i>Jeremy Weaver</i>
<b>The Chamberlain Family</b> FROM <i>Jim and Karen Chamberlain</i>	<b>Bill Eggers and Deborah McLean</b> FROM <i>Andrew Eggers</i>	<b>Frances Jacobus-Parker and Marius Hauknes</b> FROM <i>Tessa Paneth-Pollak</i>	<b>Lynn Leopold</b> FROM <i>Bruce and Katie Thompson</i>	<b>William and Valerie Yust</b> FROM <i>Tom Skola and Maureen O'Hara</i>	<b>Neil Zimmerman</b> FROM <i>Jonathan Pragle</i>
<b>Lael and Jaclyn Eisman</b> FROM <i>Shelly Schlueter</i>		<b>Mary Ann Hawkins</b> FROM <i>Tim Hamlin</i>	<b>Peter Davies and Linda DeNoyer</b> FROM <i>Caryn Davies</i>		
			<b>Logan Hill trail crew</b> FROM <i>Tom Babcock</i>		
			<b>Robin and Luke Lorenzo</b> FROM <i>Peter Merrill</i>		





*The tip of Bluff Point on Keuka Lake, where the Land Trust holds a conservation easement.*

# SCENES

from Around Our Region...

CHUCK FEIL



*Visitors on a chilly March day at our West River Preserve in the town of Italy, Yates County*

FLIT



TOM REIMERS

*A fisher, spotted at the Roy H. Park Preserve in Tompkins County. Fishers have repopulated many portions of our region after a long absence. They've also recently been sighted at our Logan Hill Nature Preserve in Tioga County, Hinchcliff Family Preserve in Onondaga County, and the Wesley Hill Nature Preserve in Ontario County.*





BRIAN MALEY

# Coming Spring 2017

Your free online guide to the best hikes, bikes, paddles, and outdoor adventures in the Finger Lakes region. Coming very soon from the Finger Lakes Land Trust.  
*Get outdoors...Go Finger Lakes!*



**GOFINGERLAKES™**  
FINGER LAKES LAND TRUST

Sign up now to be notified when  
“Go Finger Lakes” goes live!

[flit.org/GO](http://flit.org/GO)



# thank you

You helped make a difference this year! Thanks to the contributions of over 2,400 members, donors and volunteers, the Land Trust now protects over 19,000 acres—ensuring scenic vistas, local foods, clean water and wild places for everyone.

We are very grateful for gifts of all sizes and promise to use them wisely to protect more land and water. In particular, we wish to acknowledge everyone who generously gave \$100 or more in 2016.\* Please accept our heartiest thanks!

**Land and Conservation Easement Donors** Gladys Gifford and Alvin Schuster • Jamie and Maisie Houghton • Phyllis Kehoe • Katherine and Thomas Roehlke • Jan and Susan Suwinski • Stephen and Kathryn Trechter **\$100,000+** Anonymous (3) • Allyn Family Foundation • Estate of Constance T. Thomas • Jamie and Maisie Houghton • Joshua J. Allyn Fund of the Community Foundation of Collier County • Dorothy W. Rinaldo **\$20,000-99,999** Anonymous • Central New York Community Foundation • City of Ithaca • Estate of Christopher L. Henley • Estate of Suzanne West • New York's Environmental Protection Fund and the NYS Conservation Partnership Program, administered by the Land Trust Alliance • Park Foundation Inc. • Tompkins County • US Forest Service **\$10,000-19,999** Anonymous (2) • Tom Babcock • Priscilla Browning • John and Louisa Cohlan • Estate of Jane W. Brentlinger • Edward and Verna Gerbic Family Foundation • Doug and Kip Hargrave • Ellen Harrison • J.M. McDonald Foundation, Inc. • Joan Rothenberg Family Foundation • Patricia and David Maule • May K. Houck Foundation • Nora van der Stricht CALT • Walbridge Family Foundation **\$5,000-9,999** Ben Arthur • Betty Lewis Trust • Community Foundation of Tompkins County • Coming Incorporated Foundation • Louise and Burch Craig • Dominion Transmission • Maria Eisner • Meg Ewing • Gilbane Building Company • Holland and Patience Gregg • Dan Karig and Joane Molenock • Jim McConkey • Dan McIntosh • Eben McLane • Stephen and Linda Pope • Tom Reimers • The Cayuga Foundation • The Legacy Foundation of Tompkins County • Tompkins Charitable Gift Fund • David A. Weinstein and Christina M. Stark • Josie Yunis and Marty Taylor **\$1,000-4,999** Anonymous (8) • John and Marilyn Abbott • Barry Adams • John Alexander • Barbara Anderson and Andrew Clark • Harry Ash and Rebecca Clark • Neil and Maggie Atkins • Dawn Bahar-Goellner • Mary Berens and Paul Feeny • Mary M. Berk • Dave Birchenough and Carrie Lazarus • The Honorable Philip Bredesen and Ms. Andrea Conte • Brooks Family Foundation • Douglas Brush • Bill and Anne Buckingham • Sonya Burgher • James and Terry Byrnes • Canandaigua Lake Watershed Association • Canandaigua National Bank • Ted and Susan Carman • Diane and Roger Cass • Mark Chao and Miyoko Chu • J.A. Chisholm • Joan Christy and Thomas Bersani • Charles and Nancy Cladel • Thomas Clark • John Coughlin • Mac and Rochelle Cummings • Philip Cusick • Bruce and Leslie Cutler • Caryn Davies • Peter Davies and Linda DeNoyer • Patty and Tom Davis • John V. Dennis Jr. and Minfong Ho • Michael and Joyce DeVito • Sid and Suzanne Devorsetz • Tanya and Blake Dillon • Jeff and Jane Doyle • Clover M. Drinkwater • Amy Durland and Robert Mains • Earth Share of New York • Anatol and Carolyn Eberhard • Brad Edmondson and Tania Werbizky • William Eggers and Deborah McLean • Elmira Savings Bank • Herb and Connie Engman • Rick and Nicky Falck • Cornelia Farnum and Jack Booker • Martha Ferger • David Fernandez and Elizabeth Lawson • Edward Finegan • Dan Fisher • John and Molly Fitzpatrick • James Flaws and Marcia Weber • John and Gretchen Fox • James and Ellen Fralick • Mariano Garcia • Marty and Cathy Gardner • Rose Ann and Ron Gay • Gladys Gifford and Alvin Schuster • Elizabeth Gordon • Holly Gosse • Steve Green and Ann Moore • Kirk and Penny Gregg • Tim Hamlin • Peter Harriott • Joseph and Mary Ellen Hennigan • Peter and Susan Henry • L. Bruce Higgins • Ann Hinchcliff • John and Robin Moss Hinchcliff • Eva and Roald Hoffmann • Ruth and Roger Hopkins • Robert and Joan Horn Jr. • Isabel Hull • IBM Corporation • InFaith Community Foundation • Albert Joerger • Bruce Johnson • Leann and Kevin Kanda • Kathy Yoselson Fierce Determination Fund of the Community Foundation of Tompkins County • Peter and Peggy Kane • Marsha and Fredric Kardon • Rosalind Kenworthy • Jim and Sara Kersting • David and Sherill Ketchum • Elizabeth Kirchner • Bruce and Jen Klein • Bill and Carol Klepack • Carl W. Kohls • Leanna Landsmann • Bruce and Heather Lane • James Lassoie and Ruth Sherman • Paul and Kathleen Leone • Lynn Leopold • Lewis G. Schaeneman, Jr. Foundation, Inc. • Lloyd Lill • Frances Littin and Chuck Tauck • Alison Lurie • Timothy Lynn • M&T Charitable Foundation • Clifford Macbroom • Joanie Mackowski • Peter and Beth Marks • John and Candace Marsellus • David and Linda Marsh • Todd and Hadley Matarazzo • Douglas and Barbara McLlroy • John P. and Elizabeth Y. McKinnell • Melvin & Mildred Charitable Foundation • Miller Mayer, LLP • Harold Mills and Sabrina Johnston • James and Julie Moore • Gerald Morsello and Elaine Rees • Robert and Sally Neumann • Victoria Nuzzo and Bernd Blossley • NYSEG • Deborah O'Connor and Peter Lepage • Mary Ann Oyer • Kevin and Jean Parker • Paula Peter and Mike Ward • Kate and

Mont Pooley • Ed and Diane Premo • Chris Proulx and Varya Siegel • Donald and Robin Pulver • Nancy and Andrew Ramage • Red Newt Racing LLC • Elizabeth and Dennis Regan • Marjory Rinaldo-Lee and David Lee • Don and Nancy Robbins • Robert E. Hansen Family Foundation • Buzz and Gretchen Roberts • Kathleen Roth • Kim Rothman and Jenn Alford • Jean and Betty Rowley • David and Susan Ruppert • Greg and Betsy Russell • Barbara Russell Hamlin • Lindsay D. Ruth and Perry Dimmick • John Rybinski • Nancy and Charles Scholes • Stuart and Lucy Schweizer • Estate of William Schweizer • Donna Scott • Stephanie A. Sechler • Myra Shulman and James Morin • Greg Silverman and Lauren Houghton • Erron Silverstein and Maria Montgomery • Bonnie and John Sirianni • Thomas and Donna Sokol • Don Specker and Christine Sanchirico • Kyra Stephanoff and Paul Steen • Douglas B. Sutherland and Nancy Kramer • Jan and Susan Suwinski • Kristin and Charles Swain • Peter and Lisa Sykes • Marie Terlizzi and Robert Dobbs • James Terwilliger and Ellen Coyne • Bruce and Katie Thompson • William Thompson • Liz and Ed Thorndike • Kevin and Sharon Todd • Tom and Maria Eisner Fund of the Community Foundation of Tompkins County • Paul and Mary Torrisi • Charles and Nancy Trautmann • US Fish and Wildlife Service • Velmex, Inc. • John and Jean Vincent • Erik and Judy von Bucher • Peggy Walbridge • Tom and Maureen Walsh • Jennifer and Bill Warning • Christopher and Beverly Way • Wendell Weeks and Kim Frock • Patty Weisse and George Thomas • David Nakita Werier • Robert and Jo Werner • Kris and Jim West • Peter White and Mary Socci • Penelope Wickham and Thomas Kather • Geoffrey and Virginia Wickwire • John and Linda Wickwire • Donald D. Wilson • Christopher Wirth • Linda Woodard • Marianne and J.D. Young • Amy Yunis • Yunis Realty, Inc. • Theodore and Marcia Zornow **\$500-999** Anonymous (3) • Adirondack Mountain Club- Finger Lakes Chapter • Paul Anderson • Donald and Roberta Ayling • William and Patricia Ayling • Edward and Sharon Barno • Scoby Beer • Robert Bishop • Laszlo Boros and Nancy Kannianen • Richard and June Brickwedde • Bristol-Myers Squibb Employee Giving Program • Marjory Brooks • Linda and David Caughey • David and Lynne Chelimer • Chemung Canal Trust Company • Joseph and Katherine Compagni • Charles Corby • Bobby and Susan Creed • Jean Darlington and Eduardo Marchena • Todd and Ellen Donovan • Michele V. Dryer • Paul Duncan • Forrest and Sara Earl • Myron and Barbara Egtvedt • Kevin Fager • FingerLakes.com • Donna Fleming and Rick Kaufman • Kenneth Friedman • Kurt and Sorel Gottfried • Mark Gould • David Graham • Bradley and Mary Grainger • Lorraine J. Gudas • James Hamlin • Chase Hannon • Karen Hansen and Robert Schneider • Jim and Betta Hedlund • Laurel Hodgden • Martha Hueter • Ted and Joan Hullar • Christopher and Melissa Jacobs • Sally and Kip Keller • Bruce and Linda Kenan • Carolyn Kenyon and Robert Dattola • Gary Kochersberger • Debbie Koop and Lenhart Saner • Victoria F. Korth • Helen Launt • Laura W. Lee • Donald and Janet Lein • Lois Levitan and Martha Armstrong • May Lum Charitable Fund, a Donor Advised Fund of The U.S. Charitable Gift Trust • Daniel and Kirsten Mahar • Ed Marx • Rick Marx and Alan Grethel • Maxie's Supper Club • Bob McGuire and Judy Keil • Paul and Jennifer McKinnell • Bruce and Eleanor McLearn • Jeanne Mercier • Sarah Mercier Hurlbut • Stephen and Barbara Montgomery • Jim and Karol Mroczek • Rick and Mayumi Naro • Barbara B. Page • Skippy Raines • David and Debra Rasmussen • Regenerative Activities and Projects (RAP) Fund of the Community Foundation of Tompkins County • John and Judith Reppy • Richard M. Morse Conservation Club, LLC • Jeffra Ruesink and Dylan Kuckes • Wade and Joscelyne Sarkis • Kris Scholl and Brooke Oropallo • John Schroeder • Lindsay and Erik Simanis • Carol Skinner • Dennis Stein • Laura Stenzler and Karel A. Schat • Tracy Stokol and John Parker • Robert N. Strominger and Karen E. Miller • Ann Sullivan and Nick Salvatore • David and Martha Swift • Robert and Elizabeth Symon • T.G. Miller P.C. • Carol Terrizzi • The Midvale Foundation • Genevieve Thompson • Three Twins Ice Cream • Jeff Tonole • Charles and Jane Walcott • Margaret White • Nick Whitmer • Arthur and Jean Wilson • David Winkler and Amy McCune • Alicia and Mark Wittink • Stephen and Janet Wyckoff • Bill and Valerie Yust **\$250-499** Jon Allen • Richard Allen • Britta Anderson • Ronald Applegate and Rosemary Batt • Ellen B. Avril • Marilyn N. Baader • Charles and Kathy Babcock • Jesse Bank • Don Barber and Rita Rosenberg • Grace Bates • Roger Beck • Benevity Community Impact Fund • Paul Black • Martha Blair • John and Diana Bome • Brendan and Mary Brady • Robert and Marcia Brancato • Anthony and Janice Bretscher • Michael Bristol • Louise Buck • Susan Buck-Morris • Mr. and Mrs. Daniel Burke • Tom Butler • Ruth and William Cahn • Carman and Sandra

BILL HECHT



Brink Hill Fund of the Community Foundation of Tompkins County • Edith Cassel • Tom and Lisa Cavataio • CFCU Community Credit Union • Brian Chabot and Kathleen Rasmussen • Kim Clougherty • Tom and Linda Clougherty • Robert Cockram • Jeff Collins • Ed and Caroline Cope • Edwin A. Cowen • Robert and Vanne Cowie • Bill and Sarah Demo • Justin DiMatteo • Alan Dolmatch • Linda and Michael Duttweiler • Stephen and Natalia Emlen • Richard and Barbara Evans • Mark Fairchild • Mark G. Falcone • Shirley Fallon • Roger and LeMoyné Farrell • Finger Lakes Fire & Casualty Co. • Tessa Flores and Ira Goldstein • Steven Ford and Patricia Lynn-Ford • David Foster and Kathleen Jacques • Barbara Miller Fox • William and Barbara Fry • Robert and Louise Ganley • Kenneth Gardner • Carl Ginet and Sally McConnell-Ginet • Lawrence Glickman • John and Melanie Gorman • Wayne Gottlieb and Susan Suarez • Katherine Graham • Kim and John Haines-Eitzen • Nelson G. Hairston, Jr. • George and Mary Hamlin • Susan S. Hartwell • Richard and Linda Hawks Jr. • Tony and Carol Henderson • Sarah and Daniel Hincks • Honda of Ithaca • Robert J. Hunt • Lucia and Georg Jander • Jay Janowsky and Joan Tardif • Tim and Anne Marie Johnson • Laura Jones and Ginsparg-Jones Family • Art Kaufman and Rick Barton • Bruce and Anne Kennedy • Connie Kintner • Barbara A. Knuth and Kurt J. Jirka • Mr. and Mrs. James T. Kofron • Mary Jane and Rick Kornbau • James and Kimball Kraus • Paul Lattimore Jr. • Norman and Susan Lindenmuth • Howard and Harriet London • Barbara Lynch • Robert and Elizabeth Madden • Magin/Ryan Family • Kelly and Kenny Makosch • Robert and Emily Marchenese • John Marshall and Cindy Callahan • Marvin and Annette Lee Foundation Inc. • Marilou Masters • Mitchell Masters and Anne Moffat • William and Regina Mastroleo • Bill and Shirley McAneny • William McCleary and Maxine Long • Roger and Darlys McDonough • Edward and Charlene McGraw • Nancy Menning • Vicki Meyers-Wallen • Donald Mintz and Ann E. Day • Sarah and Ralph Miozzi • Edward and Elana Moses • Jamil Mroueh and Sareena Fazili • Bart Natoli and Janice Scully • John Nelson • Elizabeth Newbold and Cory Steckler • Beth Newell • Valerie Newell • Vincent Nykiel • William Olbricht • Annette Otis • Ken and Graham Ottoson • Edward Pearsall • Taylor Peck • Lloyd Powell • Bard and Gina Prentiss • David Priester and Linda Collins • Raziur Rahman • Beverly Anne Reed • Patrick and Anne Reilly • Nancy Robinson • Gordon Rowland and Anne Stork • James and Joan Ryan • Joan Ryan • Larkin Ryan and Trevor Andrews • Richard Ryan • Marc and Barbara Sadovnic • Gail M. Sanford • Kenneth Schmitt and Dorothy Rizzo • Mr. and Mrs. Craig Scott • Douglas and Darcy Sedgwick • Robert Seem • Gerard and Virginia Shanley • Emma Lou and Abdul Sheikh • Sally Sievers • Gregory and Amanda Slisz • Dan Smalls and Wendy Houseworth • Carol Smith • James and Janis Smith • Richard and Patricia Smith • Beverly and Larry Snively • Jewel Snow • George Spak, Jr. and Jane Hoteling • St. John's Episcopal Church • William Standish • Todd and Mary Jane Stell • Alan and Sandy Stone • Patricia J. Sullivan • Steve and Cheryl Swartout • Robert Sykes • Regi Teasley and Judith Saul • The Westy • This Good World Network LLC • Toro Run Winery • Paul Torrence • Travis Hyde Properties • Karen and Al Tricomi • James and Salli Tuozzolo • Union Springs Central Class of 1973 • Norman and Marguerite Uphoff • Robert Van Brunt • Thomas VanDerzee and Jane Bender VanDerzee • Jack and Judy Varney • James and Diane Walsh • Bennie and Eleanor Ware • James and Margaret Webster • Elizabeth G. Weisse • Welch Allyn Inc Matching Gifts Program • David and Heather Wheat • Paul and Lori Whitstock • Steven and Karol Wight • Scott Wilkerson • Andrew and Rocio Zepp • Victoria Zeppelin

**\$100-249** Anonymous (6) • Judith Abrams • Meg Ackerblade • Andy Ackerman and Ann Fridland • Helen Ackerman • Acorn Designs • Katie Addicott • Adirondack Mountain Club-Onondaga Chapter • Ferris Akel III • Diane C. Albrecht • Hamilton Allport and Sherry Kadlec • Paige Anderson and Michael Pinnisi • John M. Andersson • Sylvia Apple • Chip and Wendy Aquadro • Betsy and Gerald Archibald • David and Nancy Arkin • Kevin and Kathleen Armstrong • Richard Armstrong • Chris Asbury • Jill Austin • Gloria Baciewicz • Philip Bailey • Kevin Bain and Margie Ojea • Lisa F. Ballard • Bill Banaszewski and Michele Howland • J. Robert Barlow • George Barrera • Stephen and Patricia Barresi • Mr. and Mrs. Dennis Barrett • Thomas Battley • Robert Baxter • Ernie and Carol Bayles • Richard and Phyllis Beal • Ronald Beavers and Karen Lewis • Douglas F. Beech • Mary Lee Beer • Barney and Linda Beins • Robert and Carolyn Belle • David W. Benn • Rodney Bent • Gary and Fran Bergstrom • Sandra Bierbrauer • Gary Bigsby and Nadine Shields • John Billone, Jr. • Billsboro Winery •

Thomas and Dolores Bishop • Todd and Tonya Bittner • Jane and Donald Blake • Douglass and Joan Blanding • Helen Blohm • Boeing Company Matching Gifts • Borotek, Inc. • Greg Bostwick and Julia Bonney • Audrey Bowe • Mike Braell • Teresa Braell • David Breit • Kevin and Vicki Brew • Gurdon and Martha Brewster • Leo and Kathleen Brideau • Paul and Maggie Bringewatt • John and Marcia Browning • Joan and David Brumberg • James Bugh • Susannah Buhrman-Deever • Sarah Jane Burton • Edward Bush • Philip and Kathleen Byrne • Byrne Dairy Inc. • Elaine Calderone • Robert and Jane Calkins • Rita and Joe Calvo • Robert C. Camp • Diana Campbell • Jerry Caporaso • Susan Carpenter • Sean Carter • Betsy and John Carver • Cayuga Bird Club • Cayuga Lake National Bank • Cayuga Landscape Co. • Jim and Karen Chamberlain • Allan Chambliss • Johanna Chao • Wayne and Mary Chauncey • G. Yvonne and Lawrence Chavez • Gary and Bonnie Chollet • Terence Chrzan and Susann Brown • Ted Clark • Alfred and Patricia Clark Jr. • William Clay • Tom and Susan Close • Leonard Cohen and Linda Frank • Melissa Cohen • Brian Coholan • Martha and William Cole • Tom and Andrea Colgan • Alan and Candace Collmer • James R. Colloca • Jim and Ellen Compton • Paula and Ed Conan • John and Carol Condemini • Karen and John Confer • Scott Conking • Jon and Janice Conrad • Stephen and Deborah Conroy • Richard and Jane Constantino • Charlotte M. Cook • Rob and Anna Cook • Robert and MaryDan Cooper • Bill Coppard • G. Walton and Jean Cottrell • Tim and Margie Creamer • Lawrence Creatura • Carl Crumley • Robert and Rebecca Culbertson • Norman and Olivia Culver • Dick and Claire Damaske • Steve Daniel and Joan Zeller • Leslie and Cody Danks Burke • Robert Dannecker • Susan Danskin • Lois Darlington • Emily Dean and Dwight Swift • Robert Dean • Robert Jeffrey Dean • Jim and Pat DeCaro • Paul and Annette DeCarolis • LeRoy Decker • Ralph and Cynthia DeFelice • David F. Delchamps • David and Barbara Delcogliano • Jed and Barbara Delmonico • Natalie Denton • Elizabeth Derry • Noel Desch • David DeVries • Charles Dewald • Katherine Dickin • Linda Dickinson and Ira Rabois • Michael Dillon • David DiRaddo • Barbara and Frank DiSalvo • Sharon Dittman • Ronald and Sally Dixon • Joseph Dlugolenski • Martin Dodge • Thomas and Lorraine Donaher • Jill Doscher • Camille Doucet • Peter Dougherty and Dawn Dybowski • Grace Doyle • Eileen Driscoll • Robin Dubovi • Richard Dudley • Thomas Michael Duncan • Robert and Beverly Dyer • Linda Eberly • D. W. and Marilyn Edgington • Evan and Olga Edwards • Andrew Eggers • Elizabeth S. Ehrlich • Leslie and Richard Ehrlich • Ms. William Ellison • Jim and Mickey Ely • Michael Engle • Chris and Elaine Engst • Tonya and Adam Engst • Peter and Melissa Enns • Robert and Nicolena Errico • Elizabeth A. Estes • Mitchel and Robin Evans • Pat Evans and Mark Piechota • David Evelyn and Jennifer Weinraub • Susan Eyster • Gregory and Sally Ezra • Anne B. Fairbanks • Howard and Rosalind Feinstein • David Feldshuh and Martha Frommelt • Audrey McK. Fernandez • Gerald and Ann Ferro • Vivian and Gary Fields • Finger Lakes Trail Conference • John T. Finn • Robert and Sandra Finn • John Finnegan • Alex Flecker and Alison Power • David and Alanna Fontanella • Forge Cellars and Justin Boyette • Scott Forsyth • Matthew Fortin and Chavon Wilcox • Thomas and Julietta Foster • Thomas Fox • Duncan and Jane Frame • George and Jan Frantz • Sharon and Jack Fredericks • Fredyne and Chris Frey • Friends of the Tompkins County Public Library • Patricia Fries • Gianfranco and Johanna Fritelli • D. Mark and Judith Fultz • Daniel Fultz • Deborah Fyler • James Gaffney and Louise Raimondo • Glenn and Cassandra Galbreath • Jon and Lisa Mower Gandelot • Robert and Holly Gang • Kevin Geary • Eileen Gerace • David and Sharon Gerber • Cynthia Getchonis • Andrew Getzin • Marion and Alan Giambattista • Laurel C. Gibbs • Curtis and Susan Gillette • Louis and Coralie Glantz • Ann and Daniel Gold • Carla Golden • William Goldsmith • W. Lindsay Goodloe • Roger and Janet Gram • Jane Graves • Carolyn Grigorov • Teryl Gronwall • John Guckenheimer and Meredith Kusch • John A. Gustafson • Dana Hall • Rachel Hall • William Hall • Helen and Christian Haller • Dale and Karen Hallings • Cindy Halpern • Dan and Cassie Halton • Douglas and Pamela Hamlin • Margaret M. Hammond and John P. Oakley • Mary Hanno • Mary S. Harris • Susan Harrison • Ronald and Rebecca Harris-Warrick • Sarah Hatcher • Vincent and Anne Hatton • The Hawkes Family • Louise Hayes • Sue Hemsath • Richard and Petra Hepburn •

*continued on page 10*





continued from page 9

# donors

John and Susan Herbert • Mary and Steve Hershey • Gerhart and Merrill Heyer • Mary Hicks • Neil and Mary Hieber • Diane Hillmann • Roger and Suzanne Hinderliter • Nancy Hitchcock • Charles and Julianne Hoffman • Dan Hoffman • Ned and Louise Holmes • HOLT Architects, P.C. • Clifton Hood • Paul and Martha Hood • Saralinda Hooker • Carl and Kathy Hopkins • John Horan and Diane Singer • Leah Horwitz • George Houghton • William and Betty House • Claire and Rob Howard • Joe and Eleanor Hubbard • Richard D. Hubbell • Harry and Joanne Hudson, Jr. • Margot Hughes • Christopher Husson • David and Ursula Hutton • Kenneth and Jeanne Hutton • Kenneth Hyde and Nellie Ramsden • Nita Irby and Tom Divers • Ithaca Cayuga Optical Service • Tom and Shirley Itin • David Jacobs • Marcia Jacobson and Daniel Schwarz • Andre and Jean Jagendorf • Laura Jakimovich • Carol Janik • John and Susan Jaquette • Thomas Jeffers • James Jenkins and Kathy Kelly • Lyle Jenks • Christopher and Andrea Jenny • Chris Johnson and Jean Shook • Marguerite Johnson • Judith Jones • Steven Jones • Andrew Jordan • Robin and Joyce Jowaisas • Ruth Kahn • Ellen Katz • Anna Keeton and Michael Rogers • Barbara Keeton • Patricia Kehe • Paul and Shirley Kellogg • Joan and Thomas Kennedy • Richard and Barbara Kent • Harry Kesten • Robert Kibbee and Janet McCue • Karl and Leslie Kiebertz • Elizabeth Kinast • Catherine King • Jeffrey Kirshner and Lorraine Rapp • Robert Kleinberg • Charles Knauf • Heinz and Judy Koch • Mary Lee and Richard Kokosa • Susan Luther Koon • Carrie and Michael Koplinka-Loehr • Michael Kotlikoff and Carolyn McDaniel • David Kotok • David and Gloria Kreh • Scott Kreher • John A. and Barbara J. Krout • Carol Krumhansl and Jeff Roberts • W. Theodore Kuck • Heidi G. Kuehn • Stephen and Isadora Kunitz • Christine and Harold Kurland • Dan and Grace Labeille • Lakeland Rovers • Lakewood Vineyards • Victor and Sheri Ann Lamoreaux • Peter and Betsy Landre • Carolyn Lange • William Lange • Donald and Deborah Lauper • Mitchell and Linda Lavine • Theodore and Karen Lenz • Lissette Leon • Trent Leslie • Hayden Leitchworth • Simon and Carole Levin • Gilbert and Ilma Levine • Jack and Barbara Lewis • Lifespan PT, OT and SLP Services • Craig Little • Edward and Susan Phipps Littlehales • Ann C. Livingston • James and Susan Locke, III • Dennis and Ashby Longwell • Brita Lorentzen • Christine Lorenzo • Lois Lounsbery • Robert Love and Sarah Wessels • Jonathan and Cynthia Lunine • Paul Luyben • Rosemary Luzum • Michael Lynch • Lee Macbeth • Ian G. Mackenzie • Julie and Timothy Macko • Charlie and Peggy Major • Richard and Darlene Marino • Susan Mark and Mary Knepper • Mark Siwiec Team Real Estate • Jill Markham O'Hara • Lawrence S. Marks • Ted Marks • David and Kay Marshall • Todd and Jill Marshall • Peter and Ann Martin • Edward and Carolyn Maruggi • Frank Marullo • Michael Masica • Laurence and Susan Matson • James Maxwell • Brad McAllester • James and Jean McCabe • Melissa McCabe • Bill and Cynthia McCauley • Peter and Scobie McClelland • Saoire McClory and Larry Hirschberger • Charles McClure • Kevin McCormick and Catherine Cantwell • Peter McCracken and Jennifer Germann • Mary Ellen McDonald • Barbara McDowell • Douglas and Nancy McDowell • James McGarry • Jon and Kim McGarry • Richard and Sandra McGavern • Margaret McKinney • Mr. and Mrs. Gardner H. McLean • Joe McMahon and Gail Steinhart • Jane Mead • Walter and Sarah Medlin • Nancy Medsker • Peter Merrill • Chris Merta • Alan Midura and Spring Buck • Ashley Miller and Gene Endres • David Miller • James R. Miller and Chrissie Schelhas Miller • Jonathan Miller and Rebecca Nelson • A. Meredith Millman • James Minor • James and Deborah Monaco • Robert W. Mooney • Frank Moran • Carol and John Morris • Diane Morton and Ken Kempfues • Rhonda Morton • Robert and Carolyn Mrazek • John R. Myer • Judith Nadal • Rocco and Melissa Natale • Madelaine Nathanson • Hugh Neeson and Andrea Messina • Richard Nelson • Jill and George Newton • John Norris • Mary Beth Norton • Wendell A. Norvell • Dr. and Mrs. W. Eugene Notz • Harvey Nubaum • Barbara Nussbaum • Dan and Jo-Ann O'Brien • Kevin and Martha O'Brien • Terry and Ginny O'Connell • David Odell • Zachary Odell • Julie Odenbach • Michael and Pamela Odlum • Frieda O'Hanlon • Bob and Becky Olsen • Marc Olshan • Charles O'Neil • Mitchell Orenstein • Mr. and Mrs. Cal Organ • Patricia Orr • Glenn and Deborah Osborne • Bernard J. Oseroff • Ken Osika • Nancy and Ron Ostman • Marc Overdyk and Joanne Mahoney • Larry and Nan Pardee • Rosemarie Parker and Sol Gruner • Mary Ella Passage • Marilyn and Jerry Passer • David and Michelle Pastel • Joel Pasternack • Virginia Patsilevas • Nancy Pegues • Catherine Penner • Brian and Dolores Perkins • Sally Perreten • Pamela Perry, DVM • Robert and Penelope Peterson • David Piacquad • Preston Pierce • Judith Pierpont • Robert and Mabelle Pizzutiello • William A. Plummer • Sandra L. Polakow • Anna Polimeni and Brian Dennis • Karl Pospesel • Kate Potteiger and Stephen Goggin • Mark and Anne Potter • Donna and Mike Powers • Robert S. Pritchard • Carol Ann Protasiewicz • Girard Purdy • Joel Rabinowitz and Dorothy Pomponio • Radian • Joan M. Ramage and Leo MacDonald • Don M. and Carol Randel • Ron and Sue Rauscher • Kathy Rayburn • Marie Read • Martha Reddout • Timothy Reed • James Rees • Sally Reimer • Christopher Riley • Thomas and Susan Riley • Gary Riopko • Thomas and Mary Ann Rishel • David C. Rittenhouse •

Susan Ritter • David Robertson • Martha and Steve Robertson • Joan Robinson • Louise Robinson • Susan Robinson • Steven W. Rockey • Lawrence Rockwell • John Rogers • Henry and Sheila Rohrer • Turk Rose and Beth Cain • Ken and Anne Rosenberg • Stephen and Elise Rosenfeld • Zev Ross • Judith Rothenberg • David and Brenda Rounds • Kristin Rowles and Paul Ferraro • Bruce and Janet Ruggles • D. Fairchild Ruggles and Haralyn Kuckes • Rebecca Ruggles • Larry and Nancy Russell • Nerissa Russell • Richard Ruswick • Linda F. Ruth • Patrick Ryan • Ronald and Suzanne Rybak • Jean Ryon • Al and Vicky Sabin • Lisa Saether • Laurent and Cathy Saloff-Coste • James and Sherry Samuel • Marilyn Sands • Daniel and Linda Scaia • Ted Schiele and Christine Griffin • Marty Schlabach and Mary Jean Welser • Shelly Schlueter • Paul and Pamela Schmitt • Schmitt Real Estate • Stephen and Carol Schneeweiss • Jeff and Kris Schneider • Tim and Chris Schoonmaker • John and Brenda Schouten • David Schwaner • Arnie Schwartz • David I. Schwartz • David Schwartz • Tom and Martha Schwartz • Leslie and Bonnie Schweizer • Paul and Lauren Schweizer • Sieglinde and Horst Schwinge • Barbara Scott • Danny Scott • Walt Scott • Thomas and Robin Seeley • Mary Sennett • Patrick Sewell • Tina Seymour • Sam and Carol Shama • Geoffrey Sharp • Scott and Marcia Sheavly • Philip and Lucy Sheils • Brett Shelton • Robert Shephard and Sandra L. Keith • Sloan and Heather Sheridan-Thomas • Jerald Shing and Duane Diviney • Mike and Tarry Shipley • Alice and Fred Shoemaker • Linda M. Simkin • Jane A. Sinclair • Kevin and Betsy Sio • Patrizia Sione • Carol U. Sisler • Charles R. Smith • Cliff Smith and Bernie Todd • Peter and Lynn Smith • Jeffrey and Suzanne Snedeker • Philip Snyder and Patricia Paine • Judy Sobczak • Susan Soboroff • Susan Solomon • Richard Southworth • Robert and Susan Spahn • Chris Sperry and Karin Suskin • Marie Spollen • Jody Stackman • Mike Stahlbrodt • Standing Stone Vineyards • Joseph Stanley and Margaret Hellems-Stanley • Joseph Stanley • Jeffrey Stannard • Jeremy Stark • Raymond Stark • Jack and Patty Starke • Janet Starr • John and Sally States • Mary Stazie-Reinhardt • Paul Stearns and Sarah Gowin • Ross and Janet Stefano • Richard Stiggins and Nancy Bridgeford • William and Carol Stokes-Cawley • Mrs. George E. Stokoe • Benjamin Stone • Sheila Stone and Charlie Strohmman • Andrew Strait • David and Grace Strong • Thomas and Elizabeth Stuver • Mary Suits • John and Natasha Suter • Jennifer Sutherland • John and Anne Sveen • David Takacs • R.W.W. and Jo Taylor • Philip and Diane Tennant • The Slater Law Firm, PLLC • Christopher and Kathryn Thomas • Elizabeth Thomas • Richard and Christine Thomas • Woodlief Thomas • John and Pamela Thompson • Nancy E. Tiedemann • John and Carolyn Tierney • James and Deborah Tiff • Samuel and Mary Tilton • Danny Tourance • Cynthia Tracy • Bradley and Kristin Treat • Joan Tregaskis • Karen Tribble • Ralph and Patricia Troisi • James Trondsen • Yohko Tsuji • Mr. and Mrs. Samuel A. Tucker • David and Lucia Tyler • Francis J. Uhlir • George H. Ulrich • Margaret Usdansky and Gustav Niebuhr • Mary Jane Uttech • Charles Vacanti • George D. Van Arsdale • Jerome and Mary Van Buren • Linda Van Buskirk • Alison Van Keuren • Donald and Jeanne Varney • Donn Vickers and Sharon Sachs • Dax and Rielly Vlassis • Volker Vogt and Carla Marceau • Sherry Volk • Earnest R. Volpe • Demetra Vounas • W.K. Kellogg Foundation • Charlie and Susan Wallace • Norm and Margaret Ward • Robert Warfield • Linda Waymire • David and Dawn Wayne • Randy and Amy Wayne • Rick and Cindy Weakland • David Weber • Kathryn Wegman • Wayne Wegman • Catherine Weidner • Amalia Weinberg • Judy Weiner • Rick and Donna Weinstein • John and Susan Weir • Tom and Maureen Welch • John Wertis • West Wind Consulting • Cynthia Westerman • Walter S. Westfall • Alfred and Angela White • Kevin and Susan White • Steve and Beverly White • William and Olivia White • Doug and Peg Whitehouse • Andrew Whiting and Roberta Ripberger • Mark Whitmore • Marilee and David Williams • Marion Wilmot • David Wilson and Anne Clark • Don and Mary Anne Winfield • Paula Winner and Jay Russo • Joan M. Winters • Kendra and Donald Witter • Helen Wivell • Katherine Wolf and Peter Clark • Mariana Wolfner and Jim Rothenberg • Roswell and Linda Wood • Jim and Marsha Wooster • Duncan Wormer and Barbara Benedict • Susan Wulff • Mark and Raquel Yacavone • Stephen and Amy Yale-Loehr • Ruth M. Yarrow • Michael Yates • Joe Yavitt and Sue Merkel • Suan Yong • Jack Young and Susan Barnett • Scott and Crystal Young • Ellen and Neal Zaslav • James and Jeanette Zavislan • Thomas and Melissa Zell • Jan and Ken Zeserson • Andrew Zucker

**We gratefully acknowledge the following donors for their generous in kind gifts:** Ithaca Bakery • La Tourelle • Pioneer Printing • Sheldrake Point Winery • Smock • Standing Stone Vineyards

**Pro bono attorneys:** John Alexander of the law firm Sayles & Evans • Robert Besanceney • Scott Forsyth of the law firm Forsyth & Forsyth • Katie Henderson of the law office of Donald A. Schneider • Dan Hoffman • Ken Holden of the law firm Hancock Estabrook, LLP • Peter Miller • Sarah Pellerin, Edward Premo and Don Snyder of the law firm Harter Secrest & Emery, LLP • John Polimeni • Kim Rothman of the law firm Miller Mayer, LLP • Richard Ruswick, of Counsel to Levene, Gouldin & Thompson, LLP • David Tyler, of counsel to Gutman & Reiter • Serena Weckel-Purtell of the law firm Levene, Gouldin & Thompson, LLP • Christopher Werner of the law firm Boylan Code

\*Every effort has been made to ensure the accuracy and completeness of this list. If we have made an error, please accept our apologies.



# A CLOSER LOOK

## Beyond the Iconic Image: The Hidden Life of Wood Ducks

Most anyone who has perused a field guide knows the Wood Duck—perhaps the most visually distinctive and striking bird in North America. Indeed, even nonbirders may recognize the species just from having seen its iconic image in popular art, as on a hotel wall or a coffee mug.

But despite the outward flamboyance and familiarity of the species, most people haven't ever really watched Wood Ducks up close, nor gotten to know them. They are never tame like urban Mallards and Canada Geese. They are seldom abundant and conspicuous, like goldeneyes, scaup, and mergansers on open water in migration. Instead, Wood Ducks are discreet and easily overlooked, but full of secrets and hidden angles, like the woods and sheltering wetlands where they live.

Adult male Wood Ducks are unmistakable, with bright red eyes and bill contrasting with a white-striped green face, white throat and deeply russet breast. Adult female Wood Ducks have muted brown-gray plumage, with a white patch around each eye. Juveniles resemble adult females. Even in silhouette, Wood Ducks strike a profile unique among North American waterfowl, given their small size, short bills and crests that taper tidily to a point at the back of the head.

Despite their bold appearance, Wood Ducks are usually much more difficult to see than other waterfowl. Wood Ducks most often reveal their presence when females take flight, voicing a husky *hweek-hweek-hweek!* Males sound quite different, perching on high branches and issuing a rising *zzzzzzzeeb!* like a very long fine-toothed zipper being closed with a flourish.

Wood Ducks are migratory, appearing throughout central and western New York around the beginning of March and departing by mid-November. They breed in various wooded habitats, preferring mature trees near wetlands with a mix of open water and cover from vegetation, including downed timber.

In the early 20th century, Wood Ducks were thought to be seriously endangered because of unrestricted hunting and habitat loss. Then the federal Migratory Bird Treaty Act of 1918 banned the hunting of ducks for sale. In subsequent decades, most states established bag limits and seasonal restrictions on recreational hunting. These measures have led to a strong recovery. Increased beaver populations may also help explain the rise in Wood Duck populations, as flooded woods constitute ideal habitat. Wood Duck numbers are now stable or rising throughout their range,

even though the species remains a very popular target of hunters—indeed, the most-hunted duck species in the Atlantic Flyway.

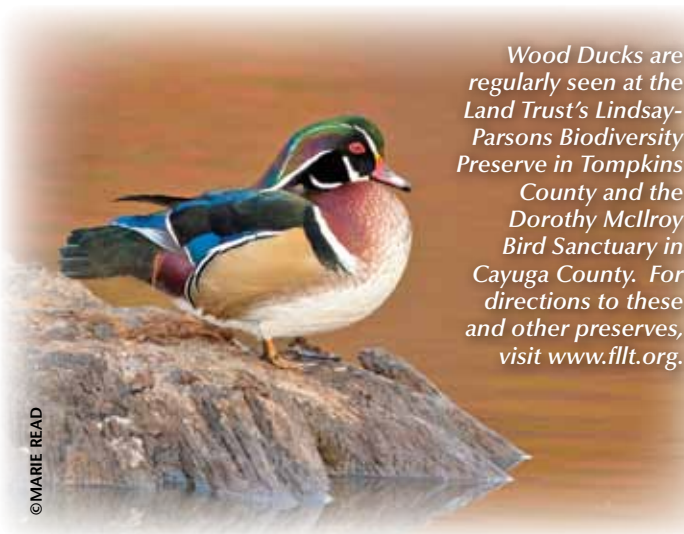
Wood Ducks have a broad diet, including seeds, aquatic grasses, fruit, and both terrestrial and aquatic invertebrates. If food is scarce in wetlands, Wood Ducks sometimes forage for acorns in woodlands, or for grain or soybeans in harvested fields.

Wood Ducks nest in cavities. They prefer natural holes, especially those formed where large branches have broken off from tree trunks, from near ground level up to 60 feet. They also take readily to human-made boxes placed on

poles or tree trunks at the edges of wetlands.

The female tends the nest and young without assistance from her mate. She lines the nest with down that she plucks from her own breast and belly. Wood Ducks are unusually prolific egg-layers, with clutch sizes usually ranging between 9 and 12 eggs. Moreover, female Wood Ducks often lay eggs in each other's nests. Hooded Mergansers also often parasitize Wood Duck nests in this way. In such cases, one can find

*Wood Ducks are regularly seen at the Land Trust's Lindsay-Parsons Biodiversity Preserve in Tompkins County and the Dorothy McIlroy Bird Sanctuary in Cayuga County. For directions to these and other preserves, visit [www.fllt.org](http://www.fllt.org).*



©MARIE READ

between 17 and 29 eggs in one Wood Duck nest.

About 24 hours after the young hatch, the mother inspects the area around the nest. If she finds it safe, she positions herself directly under the nest hole and vocalizes softly. The tiny yellow ducklings step to the lip of the hole and plummet to the ground or water, flapping their stubby wings and relying on their fuzzy plumage and wide feet to create enough friction to brake their descent. They usually land on their feet, unfazed by the impact, even from a height of five or six stories. Sometimes, if an intervening twig upsets the duckling's fall, it can land awkwardly, but even then, it remains stunned only momentarily. Then the mother leads her troop of day-old ducklings to open water. When suitable nest cavities right next to water are unavailable, this journey may involve a walk of up to 1.5 miles, fraught with risk of predation by snakes, raccoons, mink, owls, and hawks.

And so, far more than just a pretty picture, the Wood Duck is the embodiment of the wonders of ecology and evolution, the fragility of life amid natural and human-created perils, and the enduring value of sound conservation policy. Take the time this spring to go out to our woods and wetlands, listen and look, and maybe Wood Ducks might share some of their secrets with you. — Mark Chao



# Finger Lakes Land Trust

## Officers:

Holland C. Gregg, III, *President*  
Edward Premo, *Vice President*  
Patty Weisse, *Secretary*  
Jan Suwinski, *Treasurer*  
Bill Eggers, *At-Large*

## Board Members:

Dave Birchenough      Lindsay Ruth  
Robert Brancato      William S.  
Percy Browning      Schweizer  
Doug Brush      Myra J. Shulman  
Phil Greenberg      Kristin Swain  
Martha Macinski      Fred Van Sickle  
Marjory Rinaldo-Lee      Tom Walsh

## Staff:

Andrew Zepp, *Executive Director*  
Stefanie Delaney, *Bookkeeper/  
Administrative Assistant*  
Katy Dunlap, *Land Protection Specialist*  
Jason Gorman, *Nature Preserve Manager*  
Edie Jodz, *Assistant Director of  
Development*  
Kelly Makosch, *Director of  
Development and Communications*  
Mary Mulks, *Development Associate*  
Zachary Odell, *Director of Land  
Protection*  
Chris Olney, *Director of Stewardship*  
Chris Ray, *GIS Projects Manager*  
Gretchen Salm, *Land Conservation  
Support Specialist*  
Nomi Talmi, *Director of Administration*  
Kris West, *Senior Field Representative*

**Newsletter Editor:** Eben McLane

**Newsletter Layout:** Leigh Dezelan

## Advisors:

*Forestry Consultant:* Michael DeMunn  
*Stewardship Advisor:* Betsy Darlington

 [instagram@fingerlakeslandtrust](https://www.instagram.com/fingerlakeslandtrust)  
 [facebook.com/FingerLakesLandTrust](https://www.facebook.com/FingerLakesLandTrust)  
 @FLLandTrust

Sign up for our e-newsletter,  
*The Living Land*, at [www.fllt.org](http://www.fllt.org)  
Ph: 607-275-9487 • email: [info@fllt.org](mailto:info@fllt.org)



## Finger Lakes Land Trust

202 E. Court Street  
Ithaca, NY 14850

*Return Service Requested*

NON-PROFIT  
U.S. POSTAGE  
PAID  
TRUMANSBURG, NY  
PERMIT NO. 1



# Spring 2017 Calendar

*A spring day in  
Grimes Glen  
County Park in  
Naples, Ontario  
County.*

**SATURDAY, JUNE 17 FROM 2:00-4:00pm: *First Annual Ice Cream Social and Member Meeting*** at Sheffield Farm in Ithaca. *Please see insert for details.*

Please see inserts for our schedule of 2017 Spring and Summer Talks & Treks. Detailed directions and maps of our preserves can be found on our web site at [www.fllt.org](http://www.fllt.org).

Except in the event of extreme weather, walks go rain, sun or snow. Please check our Facebook page or our web site for updates at [www.fllt.org/events](http://www.fllt.org/events).

